

Recombinant

DGRmAb®

## c-Jun (DGR19004) Rabbit mAb (PBS Only)

db14460-PBS

Package : 10µg 100µg

**Product Name** : c-Jun (DGR19004) Rabbit mAb (PBS Only)**Cat.No.:** db14460-PBS**Synonyms** : AP1; p39; AP-1; c-Jun**Application** : WB, IHC-P, ICC/IF, FC, IP**Reactivity** : Human,Mouse,Rat**Host species** : Rabbit**Background**

This gene is the putative transforming gene of avian sarcoma virus 17. It encodes a protein which is highly similar to the viral protein, and which interacts directly with specific target DNA sequences to regulate gene expression. This gene is intronless and is mapped to 1p32-p31, a chromosomal region involved in both translocations and deletions in human malignancies. [provided by RefSeq, Jul 2008]

**Immunogen**

A synthetic peptide of human c-Jun

**Gene ID**

3725

**Swiss Prot**

P05412

**Synonyms**

AP1; p39; AP-1; c-Jun

**Reactivity**

Human,Mouse,Rat

**Application**

WB, IHC-P, ICC/IF, FC, IP

**Calculated MW**

36 kDa

**Observed MW**

48,43 kDa

**Host species**

Rabbit

**Clonality**

Monoclonal

**Clonality No.**

DGR19004

**Isotype**

IgG

**Purity**

Affinity Purification

**Conjugation**

Un-conjugated

**Concentration**

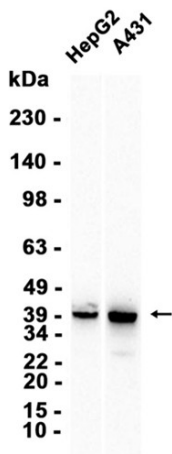
1 mg/mL

**Formulation**

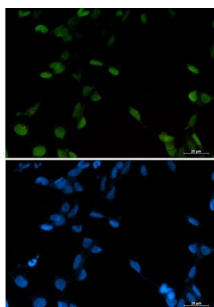
PBS Only

**Storage Stability**

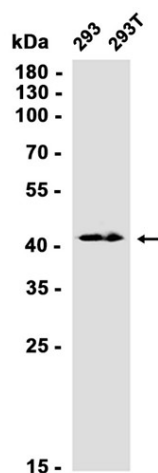
Store at -20°C. Recommended to aliquot into single-use vials. Supplied in 1X PBS (pH 7.4). BSA and Azide Free. Stable for 12 months from date of receipt.



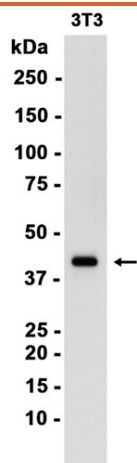
Western blot analysis of extracts from HepG2, A431 cells using [db14460](#) at 1:1000.



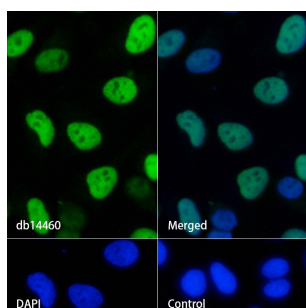
Immunofluorescent analysis of 293T cells using [db14460](#) antibody (green), and DAPI (blue).



Western blot analysis of extracts from 293, 293T cells using [db14460](#) at 1:1000.



Western blot analysis of extracts from 3T3 cells using [db14460](#) at 1:1000.



Immunofluorescence analysis of HeLa cells labelling c-Jun with [db14460](#).

The cells were fixed with 4% PFA (10min, RT) followed by treatment with 0.1% Triton X-100 (10min, RT), and blocked in 1% BSA/10% normal goat serum/0.3M glycine in 0.1% PBS-Tween 20 for 1h. The cells were then incubate with [db14460](#) (1:50) at room temprature for 1h, followed by a further incubation at room temperature for 45min with Goat Anti Rabbit IgG (H+L)-AF488 ([db10005](#), shown in green). Nuclear DNA was labeled in blue with DAPI.

Control: Secondary antibody only.