

Recombinant

DGRmAb®

**Phospho-Amyloid Precursor Protein (Thr743) (DGR32830) Rabbit mAb (PBS Only)**

db14545-PBS

Package : 10µg 100µg

**Product Name** : Phospho-Amyloid Precursor Protein (Thr743) (DGR32830) Rabbit mAb (PBS Only)**Cat.No.:** db14545-PBS**Synonyms** : AAA; AD1; PN2; ABPP; APPI; CVAP; ABETA; PN-II; preA4; CTFgamma**Application** : WB, ICC/IF, IP**Reactivity** : Human,Mouse,Rat**Host species** : Rabbit**Background**

This gene encodes a cell surface receptor and transmembrane precursor protein that is cleaved by secretases to form a number of peptides. Some of these peptides are secreted and can bind to the acetyltransferase complex APBB1/TIP60 to promote transcriptional activation, while others form the protein basis of the amyloid plaques found in the brains of patients with Alzheimer disease. In addition, two of the peptides are antimicrobial peptides, having been shown to have bacteriocidal and antifungal activities. Mutations in this gene have been implicated in autosomal dominant Alzheimer disease and cerebroarterial amyloidosis (cerebral amyloid angiopathy). Multiple transcript variants encoding several different isoforms have been found for this gene. [provided by RefSeq, Aug 2014]

**Immunogen**

A synthetic phosphopeptide corresponding to residues surrounding Thr743 of human Amyloid Precursor Protein

**Gene ID**

351

**Swiss Prot**

P05067

**Synonyms**

AAA; AD1; PN2; ABPP; APPI; CVAP; ABETA; PN-II; preA4; CTFgamma

**Reactivity**

Human,Mouse,Rat

**Application**

WB, ICC/IF, IP

**Calculated MW**

87 kDa

**Observed MW**

100 kDa

**Host species**

Rabbit

**Clonality**

Monoclonal

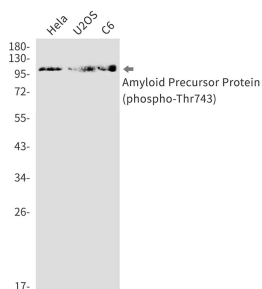
**Clonality No.**

DGR32830

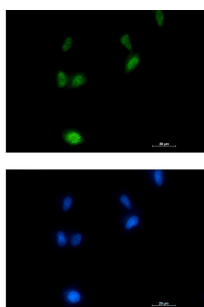
**Isotype**

IgG

<b>Purity</b>	Affinity Purification
<b>Conjugation</b>	Un-conjugated
<b>Concentration</b>	1 mg/mL
<b>Formulation</b>	PBS Only
<b>Storage Stability</b>	Store at -20°C. Recommended to aliquot into single-use vials. Supplied in 1X PBS (pH 7.4). BSA and Azide Free. Stable for 12 months from date of receipt.



Western blot detection of Amyloid Precursor Protein (phospho-Thr743) in HeLa, U2OS, C6 cell lysates using Amyloid Precursor Protein (phospho-Thr743) antibody (1:1000 diluted).



Immunofluorescent analysis of LNCaP cells using db14545 antibody (green), and DAPI (blue).