

Recombinant

DGRmAb®

Netrin 1 (DGR19045) Rabbit mAb (PBS Only)

db14569-PBS

Package : 100µg

Product Name : Netrin 1 (DGR19045) Rabbit mAb (PBS Only)**Cat.No.:** db14569-PBS**Synonyms** : NTN1L**Application** : WB**Reactivity** : Human,Mouse,Rat**Host species** : Rabbit**Background**

Netrin is included in a family of laminin-related secreted proteins. The function of this gene has not yet been defined; however, netrin is thought to be involved in axon guidance and cell migration during development. Mutations and loss of expression of netrin suggest that variation in netrin may be involved in cancer development. [provided by RefSeq, Jul 2008]

Immunogen

A synthetic peptide of human Netrin 1

Gene ID

9423

Swiss Prot

O95631

Synonyms

NTN1L

Reactivity

Human,Mouse,Rat

Application

WB

Calculated MW

68 kDa

Observed MW

68 kDa

Host species

Rabbit

Clonality

Monoclonal

Clonality No.

DGR19045

Isotype

IgG

Purity

Affinity Purification

Conjugation

Un-conjugated

Concentration

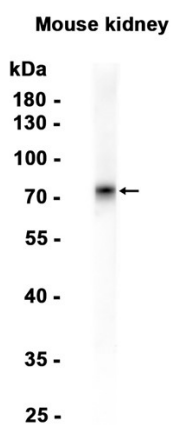
1 mg/mL

Formulation

PBS Only

Storage Stability

Store at -20°C. Recommended to aliquot into single-use vials. Supplied in 1X PBS (pH 7.4). BSA and Azide Free. Stable for 12 months from date of receipt.



Western blot analysis of extracts from Mouse kidney tissue using [db14569](#) at 1:1000.