

Recombinant

DGRmAb®

LAMP2A (DGR19373) Rabbit mAb (PBS Only)

db14575-PBS

Package : 10µg 100µg

Product Name : LAMP2A (DGR19373) Rabbit mAb (PBS Only)**Cat.No.:** db14575-PBS**Synonyms** : LAMPB; CD107b; LAMP-2; LGP-96; LGP110**Application** : WB, IHC, FC, IP**Reactivity** : Human, Mouse, Rat**Host species** : Rabbit**Background**

The protein encoded by this gene is a member of a family of membrane glycoproteins. This glycoprotein provides selectins with carbohydrate ligands. It may play a role in tumor cell metastasis. It may also function in the protection, maintenance, and adhesion of the lysosome. Alternative splicing of this gene results in multiple transcript variants encoding distinct proteins. [provided by RefSeq, Jul 2008]

Immunogen

A synthetic peptide of human LAMP2A

Gene ID

3920

Swiss Prot

P13473

Synonyms

LAMPB; CD107b; LAMP-2; LGP-96; LGP110

Reactivity

Human, Mouse, Rat

Application

WB, IHC, FC, IP

Calculated MW

45 kDa

Observed MW

110 kDa

Host species

Rabbit

Clonality

Monoclonal

Clonality No.

DGR19373

Isotype

IgG

Purity

Affinity Purification

Conjugation

Un-conjugated

Concentration

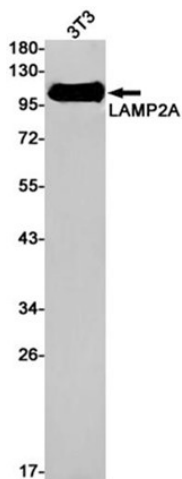
1 mg/mL

Formulation

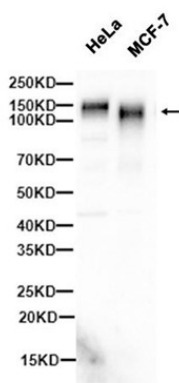
PBS Only

Storage Stability

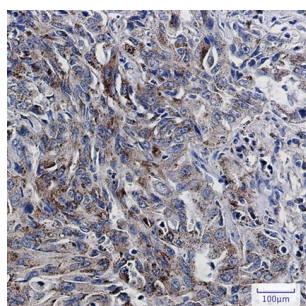
Store at -20°C. Recommended to aliquot into single-use vials. Supplied in 1X PBS (pH 7.4). BSA and Azide Free. Stable for 12 months from date of receipt.



Western blot detection of LAMP2A in 3T3 cell lysates using LAMP2A antibody(1:1000 diluted).



Western blot analysis of extracts from HeLa,MCF-7 cells using [db14575](#) at 1:1000.



Immunohistochemical analysis of paraffin-embedded human lung cancer using [db14575](#) antibody.