

Recombinant

DGRmAb®

Thrombospondin 1 (DGR33394) Rabbit mAb (PBS Only)

db14596-PBS

Package : 10µg 100µg

Product Name : Thrombospondin 1 (DGR33394) Rabbit mAb (PBS Only)**Cat.No.:** db14596-PBS**Synonyms** : TSP; THBS; TSP1; TSP-1; THBS-1**Application** : WB, IHC-P, ICC/IF, FC, IP**Reactivity** : Human,Mouse,Rat**Host species** : Rabbit**Background**

The protein encoded by this gene is a subunit of a disulfide-linked homotrimeric protein. This protein is an adhesive glycoprotein that mediates cell-to-cell and cell-to-matrix interactions. This protein can bind to fibrinogen, fibronectin, laminin, type V collagen and integrins alpha-V/beta-1. This protein has been shown to play roles in platelet aggregation, angiogenesis, and tumorigenesis. [provided by RefSeq, Jul 2008]

Immunogen

Recombinant protein of human Thrombospondin 1

Gene ID

7057

Swiss Prot

P07996

Synonyms

TSP; THBS; TSP1; TSP-1; THBS-1

Reactivity

Human,Mouse,Rat

Application

WB, IHC-P, ICC/IF, FC, IP

Calculated MW

130 kDa

Observed MW

170 kDa

Host species

Rabbit

Clonality

Monoclonal

Clonality No.

DGR33394

Isotype

IgG

Purity

Affinity Purification

Conjugation

Un-conjugated

Concentration

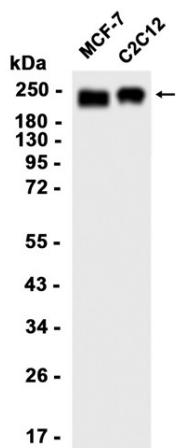
1 mg/mL

Formulation

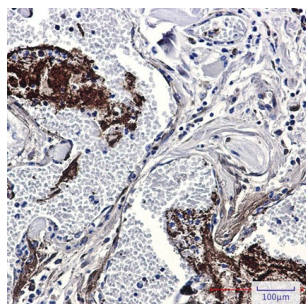
PBS Only

Storage Stability

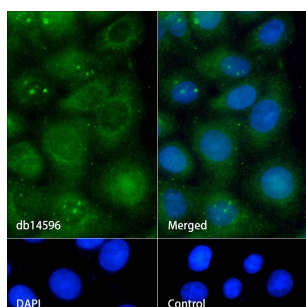
Store at -20°C. Recommended to aliquot into single-use vials. Supplied in 1X PBS (pH 7.4). BSA and Azide Free. Stable for 12 months from date of receipt.



Western blot analysis of extracts from MCF-7, C2C12 cells using [db14596](#) at 1:1000.



Immunohistochemical analysis of paraffin-embedded human Cholangiocarcinoma using [db14596](#) antibody.



Immunofluorescence analysis of HepG2 cells labelling Thrombospondin 1 with [db14596](#).

The cells were fixed with cold 100% methanol (10min, 4°C) and blocked in 1% BSA/10% normal goat serum/0.3M glycine in 0.1% PBS-Tween 20 for 1h. The cells were then incubate with [db14596](#) (1:100) at room temperature for 1h, followed by a further incubation at room temperature for 45min with Goat Anti Rabbit IgG (H+L)-AF488 ([db10005](#), shown in green). Nuclear DNA was labeled in blue with DAPI.

Control: Secondary antibody only.