

Recombinant

DGRmAb®

SMARCC1 (DGR14464) Rabbit mAb (PBS Only)

db14615-PBS

Package : 10µg 100µg

Product Name : SMARCC1 (DGR14464) Rabbit mAb (PBS Only)**Cat.No.:** db14615-PBS**Synonyms** : Rsc8; SRG3; SWI3; BAF155; CRACC1**Application** : WB, ICC/IF, FC, IP**Reactivity** : Human,Rat**Host species** : Rabbit**Background**

The protein encoded by this gene is a member of the SWI/SNF family of proteins, whose members display helicase and ATPase activities and which are thought to regulate transcription of certain genes by altering the chromatin structure around those genes. The encoded protein is part of the large ATP-dependent chromatin remodeling complex SNF/SWI and contains a predicted leucine zipper motif typical of many transcription factors. [provided by RefSeq, Jul 2008]

Immunogen

A synthetic peptide of human SMARCC1

Gene ID

6599

Swiss Prot

Q92922

Synonyms

Rsc8; SRG3; SWI3; BAF155; CRACC1

Reactivity

Human,Rat

Application

WB, ICC/IF, FC, IP

Calculated MW

123 kDa

Observed MW

155 kDa

Host species

Rabbit

Clonality

Monoclonal

Clonality No.

DGR14464

Isotype

IgG

Purity

Affinity Purification

Conjugation

Un-conjugated

Concentration

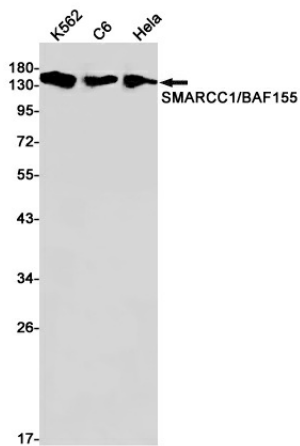
1 mg/mL

Formulation

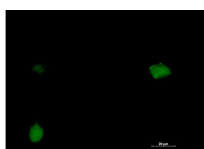
PBS Only

Storage Stability

Store at -20°C. Recommended to aliquot into single-use vials. Supplied in 1X PBS (pH 7.4). BSA and Azide Free. Stable for 12 months from date of receipt.



Western blot detection of SMARCC1/BAF155 in K562, C6, HeLa cell lysates using SMARCC1/BAF155 antibody (1:1000 diluted).



Immunofluorescent analysis of HT-1080 cells using db14615 antibody (green), and DAPI (blue).

