

Recombinant

DGRmAb®

ERK1 (DGR16077) Rabbit mAb (PBS Only)

db14725-PBS

Package : 10µg 100µg

Product Name : ERK1 (DGR16077) Rabbit mAb (PBS Only)**Cat.No.:** db14725-PBS**Synonyms** : ERK1; ERT2; ERK-1; PRKM3; P44ERK1; P44MAPK; HS44KDAP; HUMKER1A; p44-ERK1; p44-MAPK**Application** : WB, IHC, ICC/IF, FC, IP**Reactivity** : Human, Mouse**Host species** : Rabbit**Background**

The protein encoded by this gene is a member of the MAP kinase family. MAP kinases, also known as extracellular signal-regulated kinases (ERKs), act in a signaling cascade that regulates various cellular processes such as proliferation, differentiation, and cell cycle progression in response to a variety of extracellular signals. This kinase is activated by upstream kinases, resulting in its translocation to the nucleus where it phosphorylates nuclear targets. Alternatively spliced transcript variants encoding different protein isoforms have been described. [provided by RefSeq, Jul 2008]

Immunogen

A synthetic peptide of human ERK1

Gene ID

5595

Swiss Prot

P27361

Synonyms

ERK1; ERT2; ERK-1; PRKM3; P44ERK1; P44MAPK; HS44KDAP; HUMKER1A; p44-ERK1; p44-MAPK

Reactivity

Human, Mouse

Application

WB, IHC, ICC/IF, FC, IP

Calculated MW

43 kDa

Observed MW

44 kDa

Host species

Rabbit

Clonality

Monoclonal

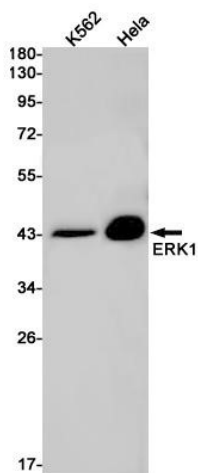
Clonality No.

DGR16077

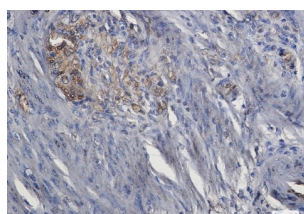
Isotype

IgG

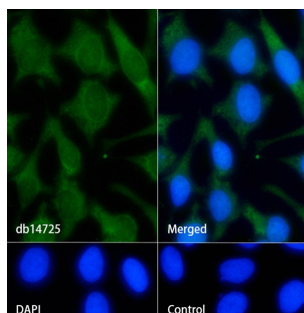
Purity	Affinity Purification
Conjugation	Un-conjugated
Concentration	1 mg/mL
Formulation	PBS Only
Storage Stability	Store at -20°C. Recommended to aliquot into single-use vials. Supplied in 1X PBS (pH 7.4). BSA and Azide Free. Stable for 12 months from date of receipt.



Western blot detection of ERK1 in K562, HeLa cell lysates using ERK1 antibody (1:1000 diluted).



Immunohistochemical analysis of paraffin-embedded human colon cancer using db14725 antibody.



Immunofluorescence analysis of HeLa cells labelling ERK1 with db14725.

The cells were fixed with cold 100% methanol (10min, 4°C) and blocked in 1% BSA/10% normal goat serum/0.3M glycine in 0.1% PBS-Tween 20 for 1h. The cells were then incubate with db14725 (1:200) at room temperature for 1h, followed by a further incubation at room temperature for 45min with Goat Anti Rabbit IgG (H+L)-AF488 db10005, shown in green). Nuclear DNA was labeled in blue with DAPI.

Control: Secondary antibody only.