

Recombinant

DGRmAb®

Paxillin (DGR12749) Rabbit mAb (PBS Only)

db14728-PBS

Package : 100µg

Product Name : Paxillin (DGR12749) Rabbit mAb (PBS Only)**Cat.No.:** db14728-PBS**Synonyms** : PXN**Application** : WB, IHC-P, ICC/IF, FC, IP**Reactivity** : Human,Mouse,Rat**Host species** : Rabbit**Background**

This gene encodes a cytoskeletal protein involved in actin-membrane attachment at sites of cell adhesion to the extracellular matrix (focal adhesion). Alternatively spliced transcript variants encoding different isoforms have been described for this gene. These isoforms exhibit different expression pattern, and have different biochemical, as well as physiological properties (PMID:9054445). [provided by RefSeq, Aug 2011]

Immunogen

A synthetic peptide of human Paxillin

Gene ID

5829

Swiss Prot

P49023

Synonyms

PXN

Reactivity

Human,Mouse,Rat

Application

WB, IHC-P, ICC/IF, FC, IP

Calculated MW

65 kDa

Observed MW

65 kDa

Host species

Rabbit

Clonality

Monoclonal

Clonality No.

DGR12749

Isotype

IgG

Purity

Affinity Purification

Conjugation

Un-conjugated

Concentration

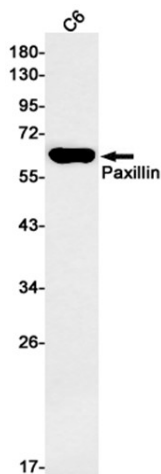
1 mg/mL

Formulation

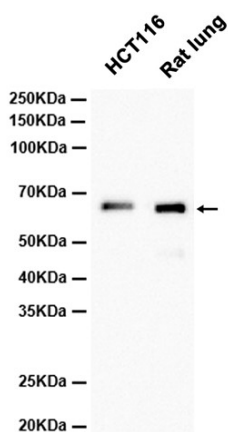
PBS Only

Storage Stability

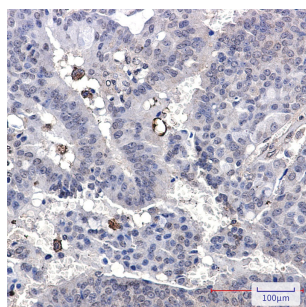
Store at -20°C. Recommended to aliquot into single-use vials. Supplied in 1X PBS (pH 7.4). BSA and Azide Free. Stable for 12 months from date of receipt.



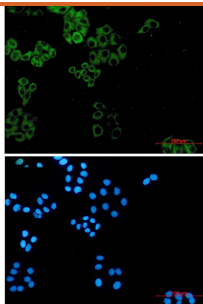
Western blot detection of Paxillin in C6 cell lysates using Paxillin antibody(1:1000 diluted).



Western blot analysis of extracts from HCT116 cells and Rat lung tissue using db14728 at 1:2000.



Immunohistochemical analysis of paraffin-embedded human breast cancer using db14728 antibody.



Immunofluorescent analysis of HeLa cells using db14728 antibody (green), and DAPI (blue).