

Recombinant

DGRmAb®

BACE1 (DGR16768) Rabbit mAb (PBS Only)

db14803-PBS

Package : 10µg 100µg

Product Name : BACE1 (DGR16768) Rabbit mAb (PBS Only)**Cat.No.:** db14803-PBS**Synonyms** : ASP2; BACE; HSPC104**Application** : WB, IP**Reactivity** : Human,Mouse,Rat**Host species** : Rabbit**Background**

This gene encodes a member of the peptidase A1 family of aspartic proteases. Alternative splicing results in multiple transcript variants, at least one of which encodes a preproprotein that is proteolytically processed to generate the mature protease. This transmembrane protease catalyzes the first step in the formation of amyloid beta peptide from amyloid precursor protein. Amyloid beta peptides are the main constituent of amyloid beta plaques, which accumulate in the brains of human Alzheimer's disease patients. [provided by RefSeq, Nov 2015]

Immunogen

A synthetic peptide of human BACE1

Gene ID

23621

Swiss Prot

P56817

Synonyms

ASP2; BACE; HSPC104

Reactivity

Human,Mouse,Rat

Application

WB, IP

Calculated MW

56 kDa

Observed MW

70 kDa

Host species

Rabbit

Clonality

Monoclonal

Clonality No.

DGR16768

Isotype

IgG

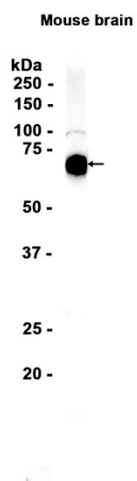
Purity

Affinity Purification

Conjugation

Un-conjugated

Concentration	1 mg/mL
Formulation	PBS Only
Storage Stability	Store at -20°C. Recommended to aliquot into single-use vials. Supplied in 1X PBS (pH 7.4). BSA and Azide Free. Stable for 12 months from date of receipt.



Western blot analysis of extracts from Mouse brain tissue using [db14803](#) at 1:1000.