

Recombinant

DGRmAb®

Aly (DGR13912) Rabbit mAb (PBS Only)

db14838-PBS

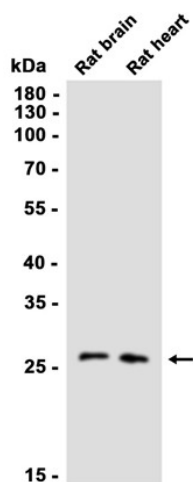
Package : 10µg 100µg

Product Name : Aly (DGR13912) Rabbit mAb (PBS Only)**Cat.No.:** db14838-PBS**Synonyms** : ALY; BEF; REF; THOC4; ALY/REF**Application** : WB, IHC-P, ICC/IF, FC, IP**Reactivity** : Human,Mouse,Rat**Host species** : Rabbit

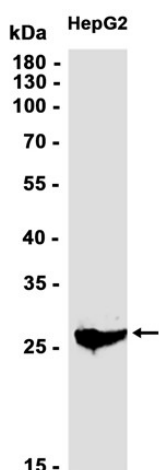
Background	The protein encoded by this gene is a heat stable, nuclear protein and functions as a molecular chaperone. It is thought to regulate dimerization, DNA binding, and transcriptional activity of basic region-leucine zipper (bZIP) proteins. [provided by RefSeq, Jul 2008]
Immunogen	A synthetic peptide of human Aly
Gene ID	10189
Swiss Prot	Q86V81
Synonyms	ALY; BEF; REF; THOC4; ALY/REF
Reactivity	Human,Mouse,Rat
Application	WB, IHC-P, ICC/IF, FC, IP
Calculated MW	27 kDa
Observed MW	27 kDa
Host species	Rabbit
Clonality	Monoclonal
Clonality No.	DGR13912
Isotype	IgG
Purity	Affinity Purification
Conjugation	Un-conjugated
Concentration	1 mg/mL
Formulation	PBS Only

Storage Stability

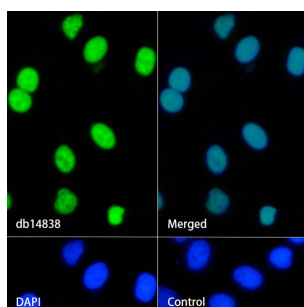
Store at -20°C. Recommended to aliquot into single-use vials. Supplied in 1X PBS (pH 7.4). BSA and Azide Free. Stable for 12 months from date of receipt.



Western blot analysis of extracts from Rat brain, Rat heart tissues using [db14838](#) at 1:1000.



Western blot analysis of extracts from HepG2 cells using [db14838](#) at 1:1000.



Immunofluorescence analysis of HeLa cells labelling Aly with [db14838](#).

The cells were fixed with 4% PFA (10min, RT) followed by treatment with 0.1% Triton X-100 (10min, RT), and blocked in 1% BSA/10% normal goat serum/0.3M glycine in 0.1% PBS-Tween 20 for 1h. The cells were then incubate with [db14838](#) (1:100) at room temperature for 1h, followed by a further incubation at room temperature for 45min with Goat Anti Rabbit IgG (H+L)-AF488 ([db10005](#), shown in green). Nuclear DNA was labeled in blue with DAPI.

Control: Secondary antibody only.