

Recombinant

DGRmAb®

CD105 (DGR20444) Rabbit mAb (PBS Only)

db14875-PBS

Package : 10µg 100µg

Product Name : CD105 (DGR20444) Rabbit mAb (PBS Only)**Cat.No.:** db14875-PBS**Synonyms** : END; HHT1; ORW1**Application** : WB, IHC-P, ICC/IF, FC, IP**Reactivity** : Human**Host species** : Rabbit**Background**

This gene encodes a homodimeric transmembrane protein which is a major glycoprotein of the vascular endothelium. This protein is a component of the transforming growth factor beta receptor complex and it binds to the beta1 and beta3 peptides with high affinity. Mutations in this gene cause hereditary hemorrhagic telangiectasia, also known as Osler-Rendu-Weber syndrome 1, an autosomal dominant multisystemic vascular dysplasia. This gene may also be involved in preeclampsia and several types of cancer. Alternatively spliced transcript variants encoding different isoforms have been found for this gene. [provided by RefSeq, May 2013]

Immunogen

Recombinant protein of human CD105

Gene ID

2022

Swiss Prot

P17813

Synonyms

END; HHT1; ORW1

Reactivity

Human

Application

WB, IHC-P, ICC/IF, FC, IP

Calculated MW

71 kDa

Observed MW

95 kDa

Host species

Rabbit

Clonality

Monoclonal

Clonality No.

DGR20444

Isotype

IgG

Purity

Affinity Purification

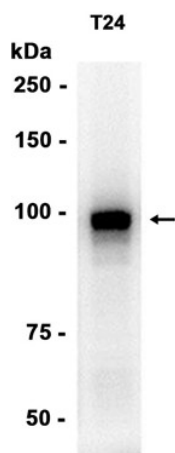
Conjugation

Un-conjugated

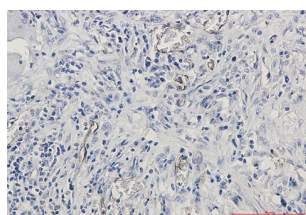
Concentration 1 mg/mL

Formulation PBS Only

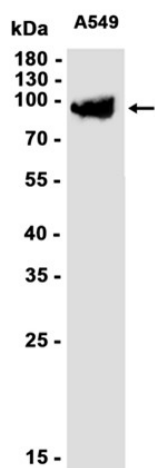
Storage Stability Store at -20°C. Recommended to aliquot into single-use vials. Supplied in 1X PBS (pH 7.4). BSA and Azide Free. Stable for 12 months from date of receipt.



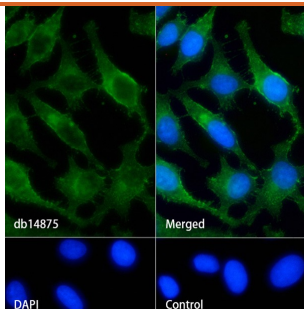
Western blot analysis of extracts from T24 cells using [db14875](#) at 1:1000.



Immunohistochemical analysis of paraffin-embedded human lung cancer using [db14875](#) antibody.



Western blot analysis of extracts from A549 cells using [db14875](#) at 1:1000.



Immunofluorescence analysis of HeLa cells labelling CD105 with [db14875](#).

The cells were fixed with cold 100% methanol (10min, 4°C) and blocked in 1% BSA/10% normal goat serum/0.3M glycine in 0.1% PBS-Tween 20 for 1h. The cells were then incubate with [db14875](#) (1:200) at room temperature for 1h, followed by a further incubation at room temperature for 45min with Goat Anti Rabbit IgG (H+L)-AF488 ([db10005](#), shown in green). Nuclear DNA was labeled in blue with DAPI.

Control: Secondary antibody only.