

Recombinant

DGRmAb®

## Chk1 (DGR12192) Rabbit mAb (PBS Only)

db14895-PBS

Package : 10µg 100µg

**Product Name** : Chk1 (DGR12192) Rabbit mAb (PBS Only)**Cat.No.:** db14895-PBS**Synonyms** : CHK1**Application** : WB, ICC/IF, FC, IP**Reactivity** : Human,Mouse,Rat**Host species** : Rabbit**Background**

The protein encoded by this gene belongs to the Ser/Thr protein kinase family. It is required for checkpoint mediated cell cycle arrest in response to DNA damage or the presence of unreplicated DNA. This protein acts to integrate signals from ATM and ATR, two cell cycle proteins involved in DNA damage responses, that also associate with chromatin in meiotic prophase I. Phosphorylation of CDC25A protein phosphatase by this protein is required for cells to delay cell cycle progression in response to double-strand DNA breaks. Several alternatively spliced transcript variants have been found for this gene. [provided by RefSeq, Oct 2011]

**Immunogen**

A synthetic peptide of human Chk1

**Gene ID**

1111

**Swiss Prot**

O14757

**Synonyms**

CHK1

**Reactivity**

Human,Mouse,Rat

**Application**

WB, ICC/IF, FC, IP

**Calculated MW**

54 kDa

**Observed MW**

54 kDa

**Host species**

Rabbit

**Clonality**

Monoclonal

**Clonality No.**

DGR12192

**Isotype**

IgG

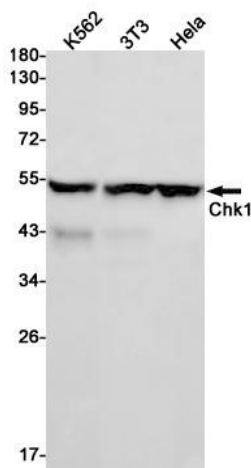
**Purity**

Affinity Purification

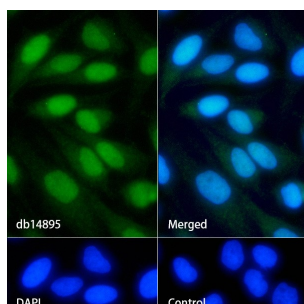
**Conjugation**

Un-conjugated

<b>Concentration</b>	1 mg/mL
<b>Formulation</b>	PBS Only
<b>Storage Stability</b>	Store at -20°C. Recommended to aliquot into single-use vials. Supplied in 1X PBS (pH 7.4). BSA and Azide Free. Stable for 12 months from date of receipt.



Western blot detection of Chk1 in K562,3T3,HeLa cell lysates using Chk1 antibody(1:1000 diluted).



Immunofluorescence analysis of HeLa cells labelling Chk1 with [db14895](#).

The cells were fixed with 4% PFA (10min, RT) followed by treatment with 0.1% Triton X-100 (10min, RT), and blocked in 1% BSA/10% normal goat serum/0.3M glycine in 0.1% PBS-Tween 20 for 1h. The cells were then incubate with [db14895](#) (1:50) at room temprature for 1h, followed by a further incubation at room temperature for 45min with Goat Anti Rabbit IgG (H+L)-AF488 [db10005](#), shown in green). Nuclear DNA was labeled in blue with DAPI.

Control: Secondary antibody only.