

Recombinant

DGRmAb®

## TGF beta 1 (DGR15235) Rabbit mAb (PBS Only)

db15107-PBS

Package : 10µg 100µg

**Product Name** : TGF beta 1 (DGR15235) Rabbit mAb (PBS Only)

**Cat.No.:** db15107-PBS

**Synonyms** : CED; LAP; DPD1; TGFB; TGFbeta

**Application** : WB, IHC-P

**Reactivity** : Human,Mouse,Rat

**Host species** : Rabbit

### Background

This gene encodes a secreted ligand of the TGF-beta (transforming growth factor-beta) superfamily of proteins. Ligands of this family bind various TGF-beta receptors leading to recruitment and activation of SMAD family transcription factors that regulate gene expression. The encoded preproprotein is proteolytically processed to generate a latency-associated peptide (LAP) and a mature peptide, and is found in either a latent form composed of a mature peptide homodimer, a LAP homodimer, and a latent TGF-beta binding protein, or in an active form consisting solely of the mature peptide homodimer. The mature peptide may also form heterodimers with other TGFB family members. This encoded protein regulates cell proliferation, differentiation and growth, and can modulate expression and activation of other growth factors including interferon gamma and tumor necrosis factor alpha. This gene is frequently upregulated in tumor cells, and mutations in this gene result in Camurati-Engelmann disease. [provided by RefSeq, Aug 2016]

**Immunogen** Recombinant protein of human TGF beta 1

**Gene ID** 7040

**Swiss Prot** P01137

**Synonyms** CED; LAP; DPD1; TGFB; TGFbeta

**Reactivity** Human,Mouse,Rat

**Application** WB, IHC-P

**Calculated MW** 44 kDa

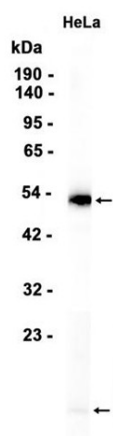
**Observed MW** 44, 12 kDa

**Host species** Rabbit

**Clonality** Monoclonal

<b>Clonality No.</b>	DGR15235
<b>Isotype</b>	IgG
<b>Purity</b>	Affinity Purification
<b>Conjugation</b>	Un-conjugated
<b>Concentration</b>	1 mg/mL
<b>Formulation</b>	PBS Only
<b>Storage Stability</b>	Store at -20°C. Recommended to aliquot into single-use vials. Supplied in 1X PBS (pH 7.4). BSA and Azide Free. Stable for 12 months from date of receipt.

Western blot analysis of extracts from HeLa cells using [db15107](#) at 1:1000.



Western blot analysis of extracts from A549, U-2 OS cells using [db15107](#) at 1:1000.

