

Recombinant

DGRmAb®

ERG (DGR14749) Rabbit mAb (PBS Only)

db15239-PBS

Package : 10µg 100µg

Product Name : ERG (DGR14749) Rabbit mAb (PBS Only)**Cat.No.:** db15239-PBS**Synonyms** : p55; erg-3**Application** : WB, IHC-P, ICC/IF, FC, IP**Reactivity** : Human,Mouse**Host species** : Rabbit**Background**

This gene encodes a member of the erythroblast transformation-specific (ETS) family of transcription factors. All members of this family are key regulators of embryonic development, cell proliferation, differentiation, angiogenesis, inflammation, and apoptosis. The protein encoded by this gene is mainly expressed in the nucleus. It contains an ETS DNA-binding domain and a PNT (pointed) domain which is implicated in the self-association of chimeric oncoproteins. This protein is required for platelet adhesion to the subendothelium, inducing vascular cell remodeling. It also regulates hematopoiesis, and the differentiation and maturation of megakaryocytic cells. This gene is involved in chromosomal translocations, resulting in different fusion gene products, such as TMPSSR2-ERG and NDRG1-ERG in prostate cancer, EWS-ERG in Ewing's sarcoma and FUS-ERG in acute myeloid leukemia. More than two dozens of transcript variants generated from combinatorial usage of three alternative promoters and multiple alternative splicing events have been reported, but the full-length nature of many of these variants has not been determined.

[provided by RefSeq, Apr 2014]

Immunogen

A synthetic peptide of human ERG

Gene ID

2078

Swiss Prot

P11308

Synonyms

p55; erg-3

Reactivity

Human,Mouse

Application

WB, IHC-P, ICC/IF, FC, IP

Calculated MW

55 kDa

Observed MW

55 kDa

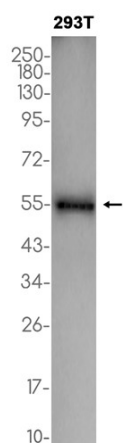
Host species

Rabbit

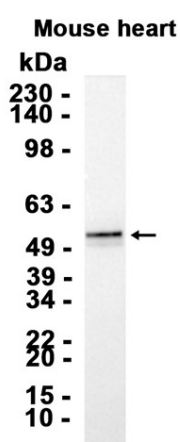
Clonality

Monoclonal

Clonality No.	DGR14749
Isotype	IgG
Purity	Affinity Purification
Conjugation	Un-conjugated
Concentration	1 mg/mL
Formulation	PBS Only
Storage Stability	Store at -20°C. Recommended to aliquot into single-use vials. Supplied in 1X PBS (pH 7.4). BSA and Azide Free. Stable for 12 months from date of receipt.



Western blot analysis of extracts from 293T cells using [db15239](#) at 1:1000.



Western blot analysis of extracts from Mouse heart tissue using [db15239](#) at 1:1000.