

Recombinant

DGRmAb®

Alcohol Dehydrogenase (DGR13604) Rabbit mAb (PBS Only)

db15532-PBS

Package : 10µg 100µg

Product Name : Alcohol Dehydrogenase (DGR13604) Rabbit mAb (PBS Only)**Cat.No.:** db15532-PBS**Synonyms** : ADH1**Application** : WB, IHC-P, ICC/IF**Reactivity** : Human,Mouse,Rat**Host species** : Rabbit**Background**

This gene encodes a member of the alcohol dehydrogenase family. The encoded protein is the alpha subunit of class I alcohol dehydrogenase, which consists of several homo- and heterodimers of alpha, beta and gamma subunits. Alcohol dehydrogenases catalyze the oxidation of alcohols to aldehydes. This gene is active in the liver in early fetal life but only weakly active in adult liver. This gene is found in a cluster with six additional alcohol dehydrogenase genes, including those encoding the beta and gamma subunits, on the long arm of chromosome 4. Mutations in this gene may contribute to variation in certain personality traits and substance dependence. [provided by RefSeq, Nov 2010]

Immunogen

A synthetic peptide of human Alcohol Dehydrogenase

Gene ID

124

Swiss Prot

P07327

Synonyms

ADH1

Reactivity

Human,Mouse,Rat

Application

WB, IHC-P, ICC/IF

Calculated MW

40 kDa

Observed MW

40 kDa

Host species

Rabbit

Clonality

Monoclonal

Clonality No.

DGR13604

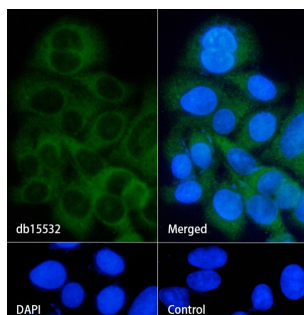
Isotype

IgG

Purity

Affinity Purification

Conjugation	Un-conjugated
Concentration	1 mg/mL
Formulation	PBS Only
Storage Stability	Store at -20°C. Recommended to aliquot into single-use vials. Supplied in 1X PBS (pH 7.4). BSA and Azide Free. Stable for 12 months from date of receipt.



Immunofluorescence analysis of HepG2 cells labelling Alcohol Dehydrogenase with [db15532](#).

The cells were fixed with cold 100% methanol (10min, 4°C) and blocked in 1% BSA/10% normal goat serum/0.3M glycine in 0.1% PBS-Tween 20 for 1h. The cells were then incubate with [db15532](#) (1:200) at room temprature for 1h, followed by a further incubation at room temperature for 45min with Goat Anti Rabbit IgG (H+L)-AF488 [db10005](#), shown in green). Nuclear DNA was labeled in blue with DAPI.

Control: Secondary antibody only.