

Recombinant

DGRmAb®

Smad2 (DGR13182) Rabbit mAb (PBS Only)

db15633-PBS

Package : 10µg 100µg

Product Name : Smad2 (DGR13182) Rabbit mAb (PBS Only)**Cat.No.:** db15633-PBS**Synonyms** : JV18; MADH2; MADR2; JV18-1; hMAD-2; hSMAD2**Application** : WB, ICC/IF, FC**Reactivity** : Human,Mouse,Rat**Host species** : Rabbit**Background**

The protein encoded by this gene belongs to the SMAD, a family of proteins similar to the gene products of the Drosophila gene 'mothers against decapentaplegic' (Mad) and the C. elegans gene Sma. SMAD proteins are signal transducers and transcriptional modulators that mediate multiple signaling pathways. This protein mediates the signal of the transforming growth factor (TGF)-beta, and thus regulates multiple cellular processes, such as cell proliferation, apoptosis, and differentiation. This protein is recruited to the TGF-beta receptors through its interaction with the SMAD anchor for receptor activation (SARA) protein. In response to TGF-beta signal, this protein is phosphorylated by the TGF-beta receptors. The phosphorylation induces the dissociation of this protein with SARA and the association with the family member SMAD4. The association with SMAD4 is important for the translocation of this protein into the nucleus, where it binds to target promoters and forms a transcription repressor complex with other cofactors. This protein can also be phosphorylated by activin type 1 receptor kinase, and mediates the signal from the activin. Alternatively spliced transcript variants have been observed for this gene. [provided by RefSeq, May 2012]

Immunogen

A synthetic peptide of human Smad2

Gene ID

4087

Swiss Prot

Q15796

Synonyms

JV18; MADH2; MADR2; JV18-1; hMAD-2; hSMAD2

Reactivity

Human,Mouse,Rat

Application

WB, ICC/IF, FC

Calculated MW

52 kDa

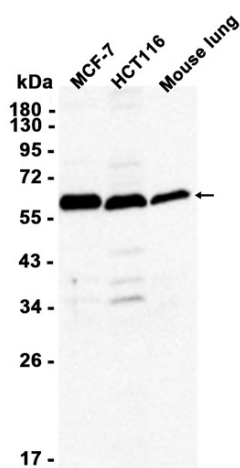
Observed MW

52 kDa

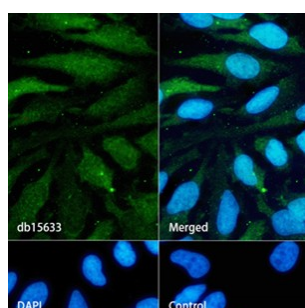
Host species

Rabbit

Clonality	Monoclonal
Clonality No.	DGR13182
Isotype	IgG
Purity	Affinity Purification
Conjugation	Un-conjugated
Concentration	1 mg/mL
Formulation	PBS Only
Storage Stability	Store at -20°C. Recommended to aliquot into single-use vials. Supplied in 1X PBS (pH 7.4). BSA and Azide Free. Stable for 12 months from date of receipt.



Western blot analysis of extracts from MCF-7, HCT116 cells and Mouse lung tissue using [db15633](#) at 1:1000.



Immunofluorescence analysis of HeLa cells labelling Smad2 with [db15633](#).

The cells were fixed with cold 100% methanol (10min, 4°C) and blocked in 1% BSA/10% normal goat serum/0.3M glycine in 0.1% PBS-Tween 20 for 1h. The cells were then incubate with [db15633](#) (1:50) at room temprature for 1h, followed by a further incubation at room temperature for 45min with Goat Anti Rabbit IgG (H+L)-AF488 ([db10005](#), shown in green). Nuclear DNA was labeled in blue with DAPI.

Control: Secondary antibody only.