

Recombinant

DGRmAb®

alpha 1 Antitrypsin (DGR12015) Rabbit mAb (PBS Only)

db15846-PBS

Package : 10µg 100µg

Product Name : alpha 1 Antitrypsin (DGR12015) Rabbit mAb (PBS Only)

Cat.No.: db15846-PBS

Synonyms : PI; A1A; AAT; PI1; A1AT; nNIF; PRO2275; alpha1AT

Application : WB, IHC-P, ICC/IF, IP

Reactivity : Human

Host species : Rabbit

Background

The protein encoded by this gene is secreted and is a serine protease inhibitor whose targets include elastase, plasmin, thrombin, trypsin, chymotrypsin, and plasminogen activator. Defects in this gene can cause emphysema or liver disease. Several transcript variants encoding the same protein have been found for this gene. [provided by RefSeq, Jul 2008]

Immunogen

Recombinant protein of human alpha 1 Antitrypsin

Gene ID

5265

Swiss Prot

P01009

Synonyms

PI; A1A; AAT; PI1; A1AT; nNIF; PRO2275; alpha1AT

Reactivity

Human

Application

WB, IHC-P, ICC/IF, IP

Calculated MW

46 kDa

Observed MW

55 kDa

Host species

Rabbit

Clonality

Monoclonal

Clonality No.

DGR12015

Isotype

IgG

Purity

Affinity Purification

Conjugation

Un-conjugated

Concentration

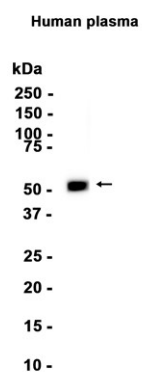
1 mg/mL

Formulation

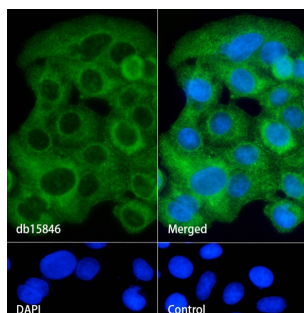
PBS Only

Storage Stability

Store at -20°C. Recommended to aliquot into single-use vials. Supplied in 1X PBS (pH 7.4). BSA and Azide Free. Stable for 12 months from date of receipt.



Western blot analysis of extracts from Human plasma tissue using [db15846](#) at 1:100000.



Immunofluorescence analysis of HepG2 cells labelling alpha 1 Antitrypsin with [db15846](#).

The cells were fixed with cold 100% methanol (10min, 4°C) and blocked in 1% BSA/10% normal goat serum/0.3M glycine in 0.1% PBS-Tween 20 for 1h. The cells were then incubate with [db15846](#) (1:50) at room temprature for 1h, followed by a further incubation at room temperature for 45min with Goat Anti Rabbit IgG (H+L)-AF488 [db10005](#), shown in green). Nuclear DNA was labeled in blue with DAPI.

Control: Secondary antibody only.