

Recombinant

DGRmAb®

## CD11b (DGR11985) Rabbit mAb (PBS Only)

db15861-PBS

Package : 10µg 100µg

**Product Name** : CD11b (DGR11985) Rabbit mAb (PBS Only)**Cat.No.:** db15861-PBS**Synonyms** : CR3A; MO1A; CD11B; MAC-1; MAC1A; SLEB6**Application** : WB, IHC-P**Reactivity** : Human,Mouse,Rat**Host species** : Rabbit**Background**

This gene encodes the integrin alpha M chain. Integrins are heterodimeric integral membrane proteins composed of an alpha chain and a beta chain. This I-domain containing alpha integrin combines with the beta 2 chain (ITGB2) to form a leukocyte-specific integrin referred to as macrophage receptor 1 ('Mac-1'), or inactivated-C3b (iC3b) receptor 3 ('CR3'). The alpha M beta 2 integrin is important in the adherence of neutrophils and monocytes to stimulated endothelium, and also in the phagocytosis of complement coated particles. Multiple transcript variants encoding different isoforms have been found for this gene. [provided by RefSeq, Mar 2009]

**Immunogen**

A synthetic peptide of human CD11b

**Gene ID**

3684

**Swiss Prot**

P11215

**Synonyms**

CR3A; MO1A; CD11B; MAC-1; MAC1A; SLEB6

**Reactivity**

Human,Mouse,Rat

**Application**

WB, IHC-P

**Calculated MW**

127 kDa

**Observed MW**

170 kDa

**Host species**

Rabbit

**Clonality**

Monoclonal

**Clonality No.**

DGR11985

**Isotype**

IgG

**Purity**

Affinity Purification

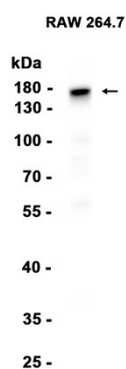
**Conjugation**

Un-conjugated

**Concentration** 1 mg/mL

**Formulation** PBS Only

**Storage Stability** Store at -20°C. Recommended to aliquot into single-use vials. Supplied in 1X PBS (pH 7.4). BSA and Azide Free. Stable for 12 months from date of receipt.



Western blot analysis of extracts from RAW264.7 cells using [db15861](#) at 1:1000.