

Recombinant

DGRmAb®

**AKT1/2 (DGR11878) Rabbit mAb (PBS Only)**

db15890-PBS

Package : 10µg 100µg

**Product Name** : AKT1/2 (DGR11878) Rabbit mAb (PBS Only)**Cat.No.:** db15890-PBS**Synonyms** : AKT; PKB; RAC; CWS6; PRKBA; PKB-ALPHA; RAC-ALPHA**Application** : WB, IHC-P, ICC/IF, FC**Reactivity** : Human,Mouse,Rat**Host species** : Rabbit**Background**

The serine-threonine protein kinase encoded by the AKT1 gene is catalytically inactive in serum-starved primary and immortalized fibroblasts. AKT1 and the related AKT2 are activated by platelet-derived growth factor. The activation is rapid and specific, and it is abrogated by mutations in the pleckstrin homology domain of AKT1. It was shown that the activation occurs through phosphatidylinositol 3-kinase. In the developing nervous system AKT is a critical mediator of growth factor-induced neuronal survival. Survival factors can suppress apoptosis in a transcription-independent manner by activating the serine/threonine kinase AKT1, which then phosphorylates and inactivates components of the apoptotic machinery. Mutations in this gene have been associated with the Proteus syndrome. Multiple alternatively spliced transcript variants have been found for this gene. [provided by RefSeq, Jul 2011]

**Immunogen**

A synthetic peptide of human AKT1

**Gene ID**

207

**Swiss Prot**

P31749

**Synonyms**

AKT; PKB; RAC; CWS6; PRKBA; PKB-ALPHA; RAC-ALPHA

**Reactivity**

Human,Mouse,Rat

**Application**

WB, IHC-P, ICC/IF, FC

**Calculated MW**

56 kDa

**Observed MW**

56 kDa

**Host species**

Rabbit

**Clonality**

Monoclonal

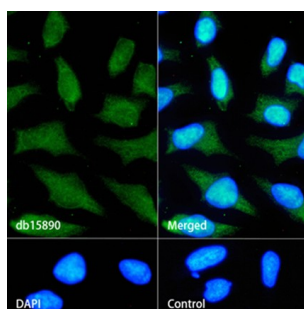
**Clonality No.**

DGR11878

**Isotype**

IgG

<b>Purity</b>	Affinity Purification
<b>Conjugation</b>	Un-conjugated
<b>Concentration</b>	1 mg/mL
<b>Formulation</b>	PBS Only
<b>Storage Stability</b>	Store at -20°C. Recommended to aliquot into single-use vials. Supplied in 1X PBS (pH 7.4). BSA and Azide Free. Stable for 12 months from date of receipt.



Immunofluorescence analysis of HeLa cells labelling AKT1/2 with [db15890](#).

The cells were fixed with cold 100% methanol (10min, 4°C) and blocked in 1% BSA/10% normal goat serum/0.3M glycine in 0.1% PBS-Tween 20 for 1h. The cells were then incubate with [db15890](#) (1:100) at room temprature for 1h, followed by a further incubation at room temperature for 45min with Goat Anti Rabbit IgG (H+L)-AF488 [db10005](#), shown in green). Nuclear DNA was labeled in blue with DAPI.

Control: Secondary antibody only.