

Recombinant

DGRmAb®

ATF-4 (DGR11603) Rabbit mAb (PBS Only)

db15953-PBS

Package : 100µg

Product Name : ATF-4 (DGR11603) Rabbit mAb (PBS Only)**Cat.No.:** db15953-PBS**Synonyms** : CREB2; TXREB; CREB-2; TAXREB67**Application** : WB, IHC-P, ICC/IF, FC, IP**Reactivity** : Human**Host species** : Rabbit**Background**

This gene encodes a transcription factor that was originally identified as a widely expressed mammalian DNA binding protein that could bind a tax-responsive enhancer element in the LTR of HTLV-1. The encoded protein was also isolated and characterized as the cAMP-response element binding protein 2 (CREB-2). The protein encoded by this gene belongs to a family of DNA-binding proteins that includes the AP-1 family of transcription factors, cAMP-response element binding proteins (CREBs) and CREB-like proteins. These transcription factors share a leucine zipper region that is involved in protein-protein interactions, located C-terminal to a stretch of basic amino acids that functions as a DNA binding domain. Two alternative transcripts encoding the same protein have been described. Two pseudogenes are located on the X chromosome at q28 in a region containing a large inverted duplication. [provided by RefSeq, Sep 2011]

Immunogen

Recombinant protein of human ATF-4

Gene ID

468

Swiss Prot

P18848

Synonyms

CREB2; TXREB; CREB-2; TAXREB67

Reactivity

Human

Application

WB, IHC-P, ICC/IF, FC, IP

Calculated MW

39 kDa

Observed MW

49 kDa

Host species

Rabbit

Clonality

Monoclonal

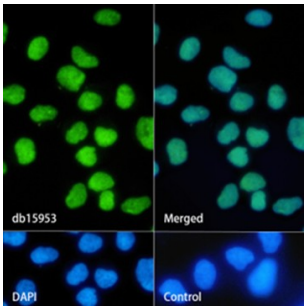
Clonality No.

DGR11603

Isotype

IgG

Purity	Affinity Purification
Conjugation	Un-conjugated
Concentration	1 mg/mL
Formulation	PBS Only
Storage Stability	Store at -20°C. Recommended to aliquot into single-use vials. Supplied in 1X PBS (pH 7.4). BSA and Azide Free. Stable for 12 months from date of receipt.



Immunofluorescence analysis of HeLa cells labelling ATF-4 with [db15953](#).

The cells were fixed with 4% PFA (10min, RT) followed by treatment with 0.1% Triton X-100 (10min, RT), and blocked in 1% BSA/10% normal goat serum/0.3M glycine in 0.1% PBS-Tween 20 for 1h. The cells were then incubate with [db15953](#)(1:1000) at room temprature for 1h, followed by a further incubation at room temperature for 45min with Goat Anti Rabbit IgG (H+L)-AF488 [db10005](#), shown in green). Nuclear DNA was labeled in blue with DAPI.

Control: Secondary antibody only.