

Recombinant

DGRmAb®

Estrogen Receptor alpha (DGR11206) Rabbit mAb (PBS Only)

db16056-PBS

Package : 10µg 100µg

Product Name : Estrogen Receptor alpha (DGR11206) Rabbit mAb (PBS Only)**Cat.No.:** db16056-PBS**Synonyms** : ER; ESR; Era; ESRA; ESTRR; NR3A1**Application** : WB, IHC, ICC/IF, FC**Reactivity** : Human**Host species** : Rabbit**Background**

This gene encodes an estrogen receptor, a ligand-activated transcription factor composed of several domains important for hormone binding, DNA binding, and activation of transcription. The protein localizes to the nucleus where it may form a homodimer or a heterodimer with estrogen receptor 2. Estrogen and its receptors are essential for sexual development and reproductive function, but also play a role in other tissues such as bone. Estrogen receptors are also involved in pathological processes including breast cancer, endometrial cancer, and osteoporosis. Alternative promoter usage and alternative splicing result in dozens of transcript variants, but the full-length nature of many of these variants has not been determined. [provided by RefSeq, Mar 2014]

Immunogen

A synthetic peptide of human Estrogen Receptor alpha

Gene ID

2099

Swiss Prot

P03372

Synonyms

ER; ESR; Era; ESRA; ESTRR; NR3A1

Reactivity

Human

Application

WB, IHC, ICC/IF, FC

Calculated MW

66 kDa

Observed MW

66 kDa

Host species

Rabbit

Clonality

Monoclonal

Clonality No.

DGR11206

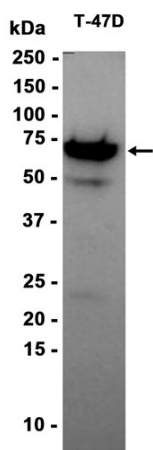
Isotype

IgG

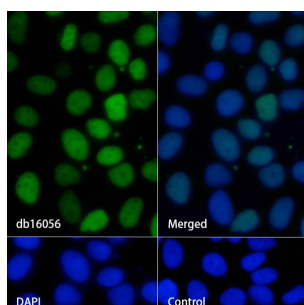
Purity

Affinity Purification

Conjugation	Un-conjugated
Concentration	1 mg/mL
Formulation	PBS Only
Storage Stability	Store at -20°C. Recommended to aliquot into single-use vials. Supplied in 1X PBS (pH 7.4). BSA and Azide Free. Stable for 12 months from date of receipt.



Western blot analysis of extracts from T-47D cells using [db16056](#) at 1:1000.



Immunofluorescence analysis of MCF-7 cells labelling Estrogen Receptor alpha with [db16056](#).

The cells were fixed with 4% PFA (10min, RT) followed by treatment with 0.1% Triton X-100 (10min, RT), and blocked in 1% BSA/10% normal goat serum/0.3M glycine in 0.1% PBS-Tween 20 for 1h. The cells were then incubate with [db16056](#) (1:200) at room temprature for 1h, followed by a further incubation at room temperature for 45min with Goat Anti Rabbit IgG (H+L)-AF488 [db10005](#), shown in green). Nuclear DNA was labeled in blue with DAPI.

Control: Secondary antibody only.