

Recombinant

DGRmAb®

IKB beta (DGR19895) Rabbit mAb (PBS Only)

db11257-PBS

Package : 10µg 100µg

Product Name : IKB beta (DGR19895) Rabbit mAb (PBS Only)**Cat.No.:** db11257-PBS**Synonyms** : IKBB; TRIP9**Application** : WB, IHC-P, ICC/IF, FC, IP**Reactivity** : Human**Host species** : Rabbit**Background**

The protein encoded by this gene belongs to the NF-kappa-B inhibitor family, which inhibit NF-kappa-B by complexing with, and trapping it in the cytoplasm. Phosphorylation of serine residues on these proteins by kinases marks them for destruction via the ubiquitination pathway, thereby allowing activation of the NF-kappa-B, which translocates to the nucleus to function as a transcription factor. Alternatively spliced transcript variants have been found for this gene.[provided by RefSeq, Jul 2011]

Immunogen

A synthetic peptide of human IKB beta

Gene ID

4793

Swiss Prot

Q15653

Synonyms

IKBB; TRIP9

Reactivity

Human

Application

WB, IHC-P, ICC/IF, FC, IP

Calculated MW

38 kDa

Observed MW

48 kDa

Host species

Rabbit

Clonality

Monoclonal

Clonality No.

DGR19895

Isotype

IgG

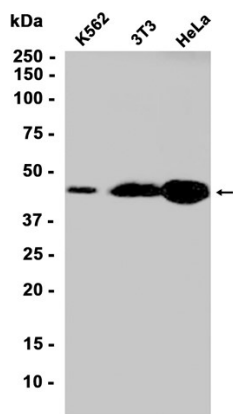
Purity

Affinity Purification

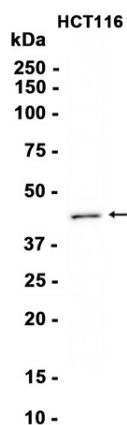
Conjugation

Un-conjugated

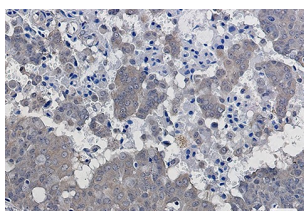
Concentration	1 mg/mL
Formulation	PBS Only
Storage Stability	Store at -20°C. Recommended to aliquot into single-use vials. Supplied in 1X PBS (pH 7.4). BSA and Azide Free. Stable for 12 months from date of receipt.



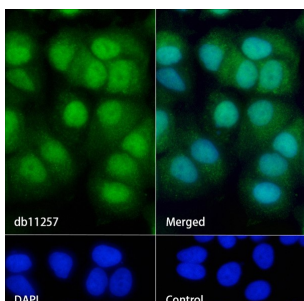
Western blot analysis of extracts from K562, 3T3, HeLa cells using [db11257](#) at 1:1000.



Western blot analysis of extracts from HCT116 cells using [db11257](#) at 1:1000.



Immunohistochemical analysis of paraffin-embedded human breast cancer using [db11257](#) antibody.



Immunofluorescence analysis of MCF-7 cells labelling IKB beta with [db11257](#).

The cells were fixed with 4% PFA (10min, RT) followed by treatment with 0.1% Triton X-100 (10min, RT), and blocked in 1% BSA/10% normal goat serum/0.3M glycine in 0.1% PBS-Tween 20 for 1h. The cells were then incubate with [db11257](#) (1:50) at room temprature for 1h, followed by a further incubation at room temperature for 45min with Goat Anti Rabbit IgG (H+L)-AF488 [db10005](#), shown in green). Nuclear DNA was labeled in blue with DAPI.

Control: Secondary antibody only.