

Recombinant

DGRmAb®

Integrin alpha 5 (DGR16775) Rabbit mAb (PBS Only)

db11971-PBS

Package : 10µg 100µg

Product Name : Integrin alpha 5 (DGR16775) Rabbit mAb (PBS Only)**Cat.No.:** db11971-PBS**Synonyms** : FNRA; CD49e; VLA-5; VLA5A**Application** : WB, IHC-P, ICC/IF, FC, IP**Reactivity** : Human,Mouse,Rat**Host species** : Rabbit**Background**

The product of this gene belongs to the integrin alpha chain family. Integrins are heterodimeric integral membrane proteins composed of an alpha subunit and a beta subunit that function in cell surface adhesion and signaling. The encoded preproprotein is proteolytically processed to generate light and heavy chains that comprise the alpha 5 subunit. This subunit associates with the beta 1 subunit to form a fibronectin receptor. This integrin may promote tumor invasion, and higher expression of this gene may be correlated with shorter survival time in lung cancer patients. Note that the integrin alpha 5 and integrin alpha V subunits are encoded by distinct genes. [provided by RefSeq, Oct 2015]

Immunogen

A synthetic peptide of human Integrin alpha 5

Gene ID

3678

Swiss Prot

P08648

Synonyms

FNRA; CD49e; VLA-5; VLA5A

Reactivity

Human,Mouse,Rat

Application

WB, IHC-P, ICC/IF, FC, IP

Calculated MW

115 kDa

Observed MW

150, 19 kDa

Host species

Rabbit

Clonality

Monoclonal

Clonality No.

DGR16775

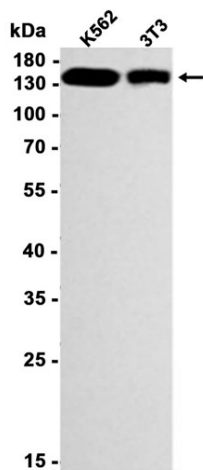
Isotype

IgG

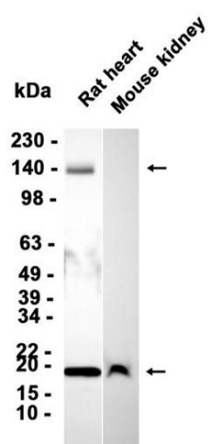
Purity

Affinity Purification

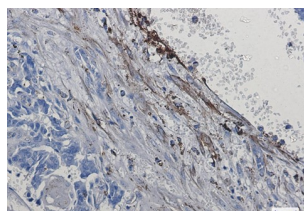
Conjugation	Un-conjugated
Concentration	1 mg/mL
Formulation	PBS Only
Storage Stability	Store at -20°C. Recommended to aliquot into single-use vials. Supplied in 1X PBS (pH 7.4). BSA and Azide Free. Stable for 12 months from date of receipt.



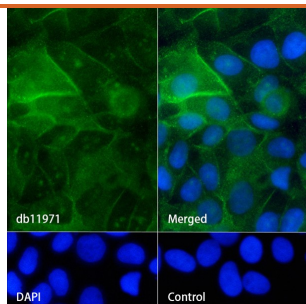
Western blot analysis of extracts from K562, 3T3 cells using [db11971](#) at 1:1000.



Western blot analysis of extracts from Rat heart, Mouse kidney tissues using [db11971](#) at 1:3000.



Immunohistochemical analysis of paraffin-embedded human breast cancer using [db11971](#) antibody.



Immunofluorescence analysis of MCF-7 cells labelling Integrin alpha 5 with [db11971](#).

The cells were fixed with 4% PFA (10min, RT) followed by treatment with 0.1% Triton X-100 (10min, RT), and blocked in 1% BSA/10% normal goat serum/0.3M glycine in 0.1% PBS-Tween 20 for 1h. The cells were then incubate with [db11971](#) (1:50) at room temprature for 1h, followed by a further incubation at room temperature for 45min with Goat Anti Rabbit IgG (H+L)-AF488 [db10005](#), shown in green). Nuclear DNA was labeled in blue with DAPI.

Control: Secondary antibody only.