

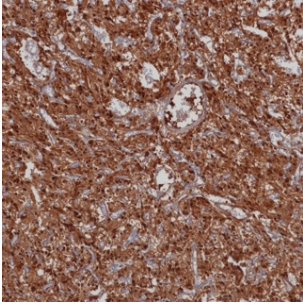
NSE (BPM6150) Mouse mAb (PBS Only)

db30129-PBS

Package : 可询价

Product Name : NSE (BPM6150) Mouse mAb (PBS Only)**Cat.No.:** db30129-PBS**Synonyms** : NSE; HEL-S-279**Application** : IHC**Reactivity** : Human**Host species** : Mouse

Background	NSE is an intracytoplasmic protein, and enolase is a dimer in mammals. It has three subunits: 1, 2, and 3, which are mainly distributed in central nerve, peripheral nerve, neuroendocrine cells and tumor cells. This antibody can specifically recognize 47kDa of NSE, and can be used for the auxiliary diagnosis of neuroendocrine tumors. D
Immunogen	Synthetic peptide within Human NSE aa 416-433
Swiss Prot	P09104
Synonyms	NSE; HEL-S-279
Reactivity	Human
Application	IHC
Calculated MW	47 kDa
Host species	Mouse
Clonality	Monoclonal
Clonality No.	BPM6150
Isotype	IgG
Purity	Affinity Purification
Conjugation	Un-conjugated
Concentration	1 mg/mL
Formulation	PBS Only
Storage Stability	Store at -20°C. Recommended to aliquot into single-use vials. Supplied in 1X PBS (pH 7.4). BSA and Azide Free. Stable for 12 months from date of receipt.



Immunohistochemistry of paraffin-embedded human pheochromocytoma using NSE antibody at dilution of 1:200 (200x lens).