

Recombinant

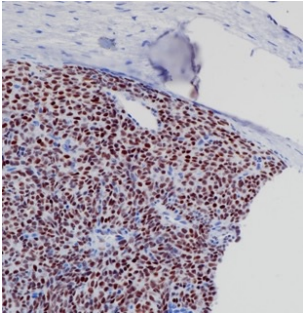
TLE1 (BP6223) Rabbit mAb (PBS Only)

db30182-PBS

Package : 可询价

Product Name : TLE1 (BP6223) Rabbit mAb (PBS Only)**Cat.No.:** db30182-PBS**Synonyms** : ESG; ESG1; GRG1**Application** : IHC**Reactivity** : Human**Host species** : Rabbit

Background	TLE1 binds to a number of transcription factors. It inhibits NF-kappa-B-regulated gene expression,also inhibits the transcriptional activation mediated by FOXA2, and by CTNNB1 and TCF family members in Wnt signaling. It enhances FOXG1/BF-1- and HES1-mediated transcriptional repression. TLE1 is widely expressed in normal and cancer tissues.
Immunogen	Full length protein corresponding to Human TLE1
Swiss Prot	Q04724
Synonyms	ESG; ESG1; GRG1
Reactivity	Human
Application	IHC
Calculated MW	83 kDa
Host species	Rabbit
Clonality	Monoclonal
Clonality No.	BP6223
Isotype	IgG
Purity	Affinity Purification
Conjugation	Un-conjugated
Concentration	1 mg/mL
Formulation	PBS Only
Storage Stability	Store at -20°C. Recommended to aliquot into single-use vials. Supplied in 1X PBS (pH 7.4). BSA and Azide Free. Stable for 12 months from date of receipt.



Immunohistochemistry of paraffin-embedded human synovial sarcoma using TLE1 antibody at dilution of 1:200 (200x lens).