

## Recombinant

## Arginase-1 (BP6158) Rabbit mAb (PBS Only)

db30138-PBS

Package : 可询价

**Product Name** : Arginase-1 (BP6158) Rabbit mAb (PBS Only)**Cat.No.:** db30138-PBS**Synonyms** : ARG1**Application** : IHC**Reactivity** : Human**Host species** : Rabbit**Background**

Arginase 1 (ARG-1) is a new hepatocyte marker and a key enzyme in the liver urea cycle. It is well expressed in normal hepatic nuclei, but not in other normal tissues, and is highly expressed in hepatocellular carcinoma with different degrees of differentiation. The better the differentiation is, the higher the positive rate is, and it is superior to HepPar 1 in poorly differentiated hepatocellular carcinoma. It is more sensitive than AFP and HepPar 1 in the diagnosis of hepatocellular carcinoma, and is often used in combination with Glypican3 for hepatocellular carcinoma and metastatic carcinoma. Defects in ARG1 are the cause of argininemia (ARGIN) [MIM:207800]; also known as hyperargininemia.

**Immunogen**

Synthetic peptide within Human Liver Arginase aa 300- 400. The exact sequence is proprietary

**Swiss Prot**

P05089

**Synonyms**

ARG1

**Reactivity**

Human

**Application**

IHC

**Calculated MW**

35 kDa

**Host species**

Rabbit

**Clonality**

Monoclonal

**Clonality No.**

BP6158

**Isotype**

IgG

**Purity**

Affinity Purification

**Conjugation**

Un-conjugated

**Concentration**

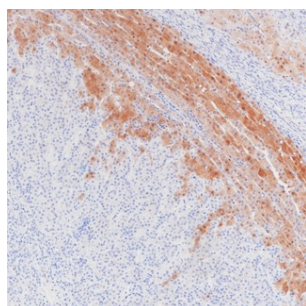
1 mg/mL

**Formulation**

PBS Only

**Storage Stability**

Store at -20°C. Recommended to aliquot into single-use vials. Supplied in 1X PBS (pH 7.4). BSA and Azide Free. Stable for 12 months from date of receipt.



Immunohistochemistry of paraffin-embedded human liver cancer using Arginase-1 antibody at dilution of 1:200 (200x lens).