

Recombinant

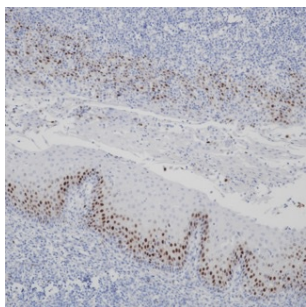
Cyclin D1 (BP6076) Rabbit mAb (PBS Only)

db30065-PBS

Package : 可询价

Product Name : Cyclin D1 (BP6076) Rabbit mAb (PBS Only)**Cat.No.:** db30065-PBS**Synonyms** : BCL1; PRAD1; U21B31; D11S287E**Application** : IHC, WB**Reactivity** : Human**Host species** : Rabbit

Background	Cyclin D1 (synonymes: PRAD1, parathyroid adenomatosis 1, CCND1) is a 295 amino acid protein, 36 kDa, which belongs to the highly conserved cyclin family, whose members are characterized by a dramatic periodicity in protein abundance throughout the cell cycle.
Immunogen	Synthetic peptide corresponding to residues within aa200-295 of Cyclin D1 was used as an immunogen
Swiss Prot	P24385
Synonyms	BCL1; PRAD1; U21B31; D11S287E
Reactivity	Human
Application	IHC, WB
Calculated MW	34 kDa
Host species	Rabbit
Clonality	Monoclonal
Clonality No.	BP6076
Isotype	IgG
Purity	Affinity Purification
Conjugation	Un-conjugated
Concentration	1 mg/mL
Formulation	PBS Only
Storage Stability	Store at -20°C. Recommended to aliquot into single-use vials. Supplied in 1X PBS (pH 7.4). BSA and Azide Free. Stable for 12 months from date of receipt.



Immunohistochemistry of paraffin-embedded human tonsil using Cyclin D1 antibody at dilution of 1:200 (200x lens).