

## Recombinant

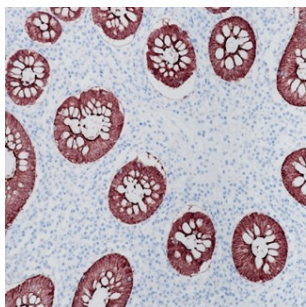
## Villin (BP6066) Rabbit mAb (PBS Only)

db30056-PBS

Package : 可询价

**Product Name** : Villin (BP6066) Rabbit mAb (PBS Only)**Cat.No.:** db30056-PBS**Synonyms** : VIL; D2S1471**Application** : IHC, WB, FC**Reactivity** : Human**Host species** : Rabbit

<b>Background</b>	Villin is a 93 kDa calcium-regulated, actin-binding protein that plays a role in regulating actin filament assembly. It is a major constituent in the microvilli, which compose the brush border of epithelial cells forming absorptive surfaces of the intestinal and renal proximal tubular epithelia.
<b>Immunogen</b>	Synthetic peptide corresponding to Villin residues within aa600-700 of Villin was used as an immunogen
<b>Swiss Prot</b>	P09327
<b>Synonyms</b>	VIL; D2S1471
<b>Reactivity</b>	Human
<b>Application</b>	IHC, WB, FC
<b>Calculated MW</b>	93 kDa
<b>Host species</b>	Rabbit
<b>Clonality</b>	Monoclonal
<b>Clonality No.</b>	BP6066
<b>Isotype</b>	IgG
<b>Purity</b>	Affinity Purification
<b>Conjugation</b>	Un-conjugated
<b>Concentration</b>	1 mg/mL
<b>Formulation</b>	PBS Only
<b>Storage Stability</b>	Store at -20°C. Recommended to aliquot into single-use vials. Supplied in 1X PBS (pH 7.4). BSA and Azide Free. Stable for 12 months from date of receipt.



Immunohistochemistry of paraffin-embedded human colon using Villin antibody at dilution of 1:200 (200x lens).