

## Recombinant

## Cytokeratin 14 (BP6052) Rabbit mAb (PBS Only)

db30042-PBS

Package : 可询价

**Product Name :** Cytokeratin 14 (BP6052) Rabbit mAb (PBS Only)**Cat.No.:** db30042-PBS**Synonyms :** K14; NFJ; CK14; EBS3; EBS4**Application :** IHC, WB, FC**Reactivity :** Human**Host species :** Rabbit**Background**

Cytokeratin 14 is a member of the type I keratin family of intermediate filament proteins. It always pairs with the type II keratin K5 and form the primary keratin pair of the keratinocytes of stratified squamous epithelia, including the epidermis as well as mucosal non-keratinizing stratified squamous epithelia.

**Immunogen**

Synthetic peptide corresponding to cytokeratin 14 residues within aa372-472 of cytokeratin 14 was used as an immunogen

**Swiss Prot**

P02533

**Synonyms**

K14; NFJ; CK14; EBS3; EBS4

**Reactivity**

Human

**Application**

IHC, WB, FC

**Calculated MW**

52 kDa

**Host species**

Rabbit

**Clonality**

Monoclonal

**Clonality No.**

BP6052

**Isotype**

IgG

**Purity**

Affinity Purification

**Conjugation**

Un-conjugated

**Concentration**

1 mg/mL

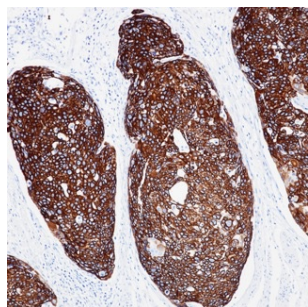
**Formulation**

PBS Only

**Storage Stability**

Store at -20°C. Recommended to aliquot into single-use vials. Supplied in 1X PBS (pH 7.4). BSA

and Azide Free. Stable for 12 months from date of receipt.



Immunohistochemistry of paraffin-embedded human esophageal squamous carcinoma using Cytokeratin 14 antibody at dilution of 1:200 (200x lens).