

Recombinant

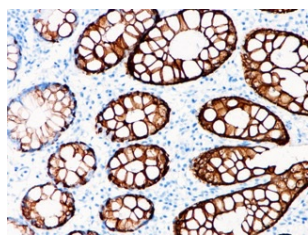
Cytokeratin 20 (BP6030) Rabbit mAb (PBS Only)

db30021-PBS

Package : 可询价

Product Name : Cytokeratin 20 (BP6030) Rabbit mAb (PBS Only)**Cat.No.:** db30021-PBS**Synonyms :** K20; CD20; CK20; CK-20; KRT21**Application :** IHC, WB, FC**Reactivity :** Human**Host species :** Rabbit

Background	Cytokeratin 20 is the simple-epithelial keratin with the most restricted expression pattern. For pair formation, its type II partner usually appears to be cytokeratin 8.
Immunogen	Synthetic peptide corresponding to cytokeratin 20 residues within aa324 - 424 of cytokeratin 20 was used as an immunogen
Swiss Prot	P35900
Synonyms	K20; CD20; CK20; CK-20; KRT21
Reactivity	Human
Application	IHC, WB, FC
Calculated MW	48 kDa
Host species	Rabbit
Clonality	Monoclonal
Clonality No.	BP6030
Isotype	IgG
Purity	Affinity Purification
Conjugation	Un-conjugated
Concentration	1 mg/mL
Formulation	PBS Only
Storage Stability	Store at -20°C. Recommended to aliquot into single-use vials. Supplied in 1X PBS (pH 7.4). BSA and Azide Free. Stable for 12 months from date of receipt.



Immunohistochemistry of paraffin-embedded human colon using Cytokeratin 20 antibody at dilution of 1:200 (200x lens).