

LC3A/B Rabbit pAb (PBS Only)

db6327-PBS

Package : 可询价

Product Name : LC3A/B Rabbit pAb (PBS Only)**Cat.No.:** db6327-PBS**Synonyms** : LC3; LC3A; ATG8E; MAP1ALC3; MAP1BLC3; MAP1LC3A; LC3B; ATG8F; MAP1LC3B-a;
MAP1A/1BLC3; MAP1LC3B**Application** : WB**Reactivity** : Human, Mouse, Rat**Host species** : Rabbit**Background**

Macroautophagy is the major inducible pathway for the general turnover of cytoplasmic constituents in eukaryotic cells, it is also responsible for the degradation of active cytoplasmic enzymes and organelles during nutrient starvation. Macroautophagy involves the formation of double-membrane bound autophagosomes which enclose the cytoplasmic constituent targeted for degradation in a membrane bound structure, which then fuse with the lysosome (or vacuole) releasing a single-membrane bound autophagic bodies which are then degraded within the lysosome (or vacuole). MAP1A and MAP1B are microtubule-associated proteins which mediate the physical interactions between microtubules and components of the cytoskeleton. These proteins are involved in formation of autophagosomal vacuoles (autophagosomes). MAP1A and MAP1B each consist of a heavy chain subunit and multiple light chain subunits. MAP1LC3a is one of the light chain subunits and can associate with either MAP1A or MAP1B. The precursor molecule is cleaved by APG4B/ATG4B to form the cytosolic form, LC3-I. This is activated by APG7L/ATG7, transferred to ATG3 and conjugated to phospholipid to form the membrane-bound form, LC3-II.

Immunogen

Synthetic peptide

Gene ID

84557, 81631

Swiss Prot

Q9H492, Q9GZQ8

SynonymsLC3; LC3A; ATG8E; MAP1ALC3; MAP1BLC3; MAP1LC3A; LC3B; ATG8F; MAP1LC3B-a;
MAP1A/1BLC3; MAP1LC3B**Reactivity**

Human, Mouse, Rat

Application

WB

Calculated MW

14 kDa

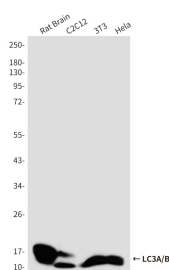
Observed MW

14,16 kDa

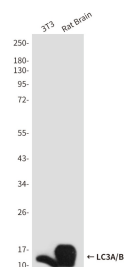
Host species

Rabbit

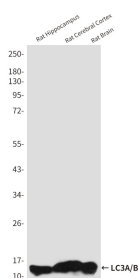
Clonality	Polyclonal
Isotype	IgG
Purity	Affinity Purification
Conjugation	Un-conjugated
Concentration	1 mg/mL
Formulation	PBS Only
Storage Stability	Store at -20°C. Recommended to aliquot into single-use vials. Supplied in 1X PBS (pH 7.4). BSA and Azide Free. Stable for 12 months from date of receipt.



Western blot analysis of LC3A/B in rat Brain, C2C12, 3T3 and Hela lysates using LC3A/B antibody.



Western blot analysis of LC3A/B in 3T3 and rat Brain lysates using LC3A/B antibody.



Western blot analysis of LC3A/B in rat Hippocampus, rat Cerebral Cortex and rat Brain lysates using LC3A/B antibody.