

ERK1/2 (1B4) Mouse mAb (PBS Only)

db6570-PBS

Package : 可询价

Product Name : ERK1/2 (1B4) Mouse mAb (PBS Only)**Cat.No.:** db6570-PBS**Synonyms :** MAPK3; ERK1; ERT2; ERK-1; PRKM3; P44ERK1; P44MAPK; HS44KDAP; HUMKER1A; p44-ERK1; p44-MAPK; MAPK1; ERK; p38; p40; p41; ERK2; ERT1; ERK-2; MAPK2; PRKM1; PRKM2; P42MAPK; p41mapk; p42-MAPK**Application :** WB, IHC-P**Reactivity :** Human, Rat, Mouse**Host species :** Mouse**Background**

erine/threonine kinase which acts as an essential component of the MAP kinase signal transduction pathway. MAPK1/ERK2 and MAPK3/ERK1 are the 2 MAPKs which play an important role in the MAPK/ERK cascade. They participate also in a signaling cascade initiated by activated KIT and KITLG/SCF. Depending on the cellular context, the MAPK/ERK cascade mediates diverse biological functions such as cell growth, adhesion, survival and differentiation through the regulation of transcription, translation, cytoskeletal rearrangements.

Immunogen

Synthetic peptide conjugated to KLH

Gene ID

5594, 5595

Swiss Prot

P27361, P28482

Synonyms

MAPK3; ERK1; ERT2; ERK-1; PRKM3; P44ERK1; P44MAPK; HS44KDAP; HUMKER1A; p44-ERK1; p44-MAPK; MAPK1; ERK; p38; p40; p41; ERK2; ERT1; ERK-2; MAPK2; PRKM1; PRKM2; P42MAPK; p41mapk; p42-MAPK

Reactivity

Human, Rat, Mouse

Application

WB, IHC-P

Calculated MW

44,42 kDa

Observed MW

44,42 kDa

Host species

Mouse

Clonality

Monoclonal

Clonality No.

1B4-6A3-10A5

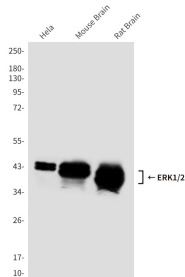
Isotype

IgG1

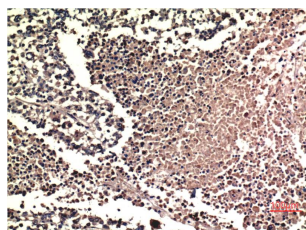
Purity

Affinity Purification

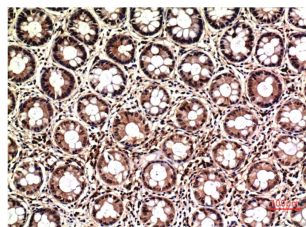
Conjugation	Un-conjugated
Concentration	1 mg/mL
Formulation	PBS Only
Storage Stability	Store at -20°C. Recommended to aliquot into single-use vials. Supplied in 1X PBS (pH 7.4). BSA and Azide Free. Stable for 12 months from date of receipt.



Western blot analysis of ERK1/2 (1B4) in Hela lysates, mouse Brain lysates, rat Brain lysates using ERK1/2 antibody.



Immunohistochemistry analysis of paraffin-embedded Human Lung Carcinoma Tissue using ERK1/2 antibody. High-pressure and temperature Sodium Citrate pH 6.0 was used for antigen retrieval.



Immunohistochemistry analysis of paraffin-embedded Human Colon Carcinoma Tissue using ERK1/2 antibody. High-pressure and temperature Sodium Citrate pH 6.0 was used for antigen retrieval.