

CD10 (7C7) Mouse mAb (PBS Only)

db6527-PBS

Package : 可询价

Product Name : CD10 (7C7) Mouse mAb (PBS Only)**Cat.No.:** db6527-PBS**Synonyms** : Atriopeptidase; gp100; MGC126681; Enkephalinase**Application** : IHC-P**Reactivity** : Human, Rat, Mouse**Host species** : Mouse**Background**

Thermolysin-like specificity, but is almost confined on acting on polypeptides of up to 30 amino acids (PubMed/15283675, PubMed/8168535). Biologically important in the destruction of opioid peptides such as Met- and Leu-enkephalins by cleavage of a Gly-Phe bond (PubMed/17101991). Able to cleave angiotensin-1, angiotensin-2 and angiotensin 1-9 (PubMed/15283675). Involved in the degradation of atrial natriuretic factor (ANF) (PubMed/2531377, PubMed/2972276). Displays UV-inducible elastase activity toward skin preelastic and elastic fibers (PubMed/20876573).

Immunogen

Synthetic peptide conjugated to KLH

Gene ID

4311

Swiss Prot

P08473

Synonyms

Atriopeptidase; gp100; MGC126681; Enkephalinase

Reactivity

Human, Rat, Mouse

Application

IHC-P

Host species

Mouse

Clonality

Monoclonal

Clonality No.

7C7-1G5-10E3

Isotype

IgG1

Purity

Affinity Purification

Conjugation

Un-conjugated

Concentration

1 mg/mL

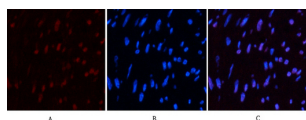
Formulation

PBS Only

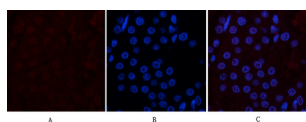
Storage Stability

Store at -20°C. Recommended to aliquot into single-use vials. Supplied in 1X PBS (pH 7.4). BSA

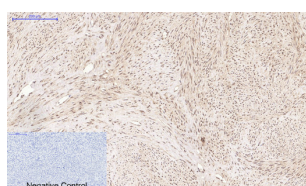
and Azide Free. Stable for 12 months from date of receipt.



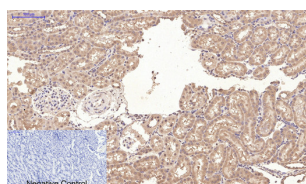
Immunofluorescence analysis of CD10 (7C7) in Human uterus tissue using CD10 (7C7) antibody(red),and DAPI (blue).



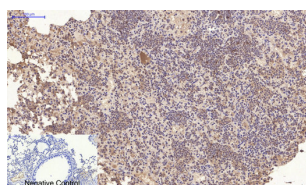
Immunofluorescence analysis of CD10 (7C7) in rat kidney using CD10 antibody(red),and DAPI (blue).



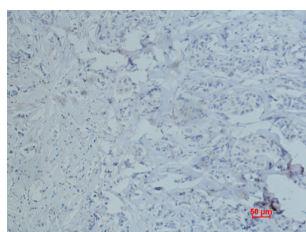
Immunohistochemistry analysis of paraffin-embedded Human uterus tissue using CD10 antibody. High-pressure and temperature Sodium Citrate pH 6.0 was used for antigen retrieval. Negative control was used by secondary antibody only.



Immunohistochemistry analysis of paraffin-embedded rat kidney tissue using CD10 antibody.High-pressure and temperature Sodium Citrate pH 6.0 was used for antigen retrieval. Negative control was used by secondary antibody only.



Immunohistochemistry analysis of paraffin-embedded mouse lung tissue using CD10 antibody.High-pressure and temperature Sodium Citrate pH 6.0 was used for antigen retrieval.Negative control was used by secondary antibody only.



Immunohistochemistry analysis of paraffin-embedded Human breast cancer using CD10 (7C7) antibody.High-pressure and temperature Sodium Citrate pH 6.0 was used for antigen retrieval.v