

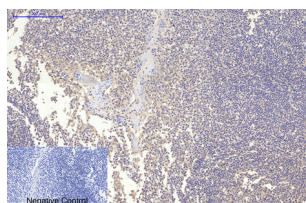
MAP2 (3B5) Mouse mAb (PBS Only)

db6438-PBS

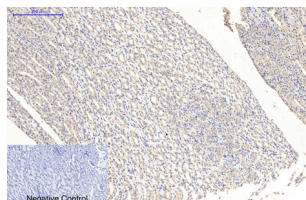
Package : 可询价

Product Name : MAP2 (3B5) Mouse mAb (PBS Only)**Cat.No.:** db6438-PBS**Synonyms** : Microtubule associated protein 2; MAP2A; MAP2B; MAP2C**Application** : IHC-P, ICC/IF**Reactivity** : Human, Mouse, Rat**Host species** : Mouse

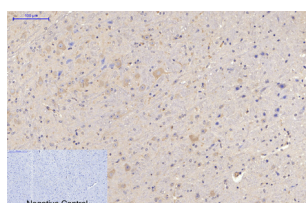
Background	The exact function of MAP2 is unknown but MAPs may stabilize the microtubules against depolymerization. They also seem to have a stiffening effect on microtubules.
Immunogen	Synthetic Peptide of MAP2
Gene ID	4133
Swiss Prot	P11137
Synonyms	Microtubule associated protein 2; MAP2A; MAP2B; MAP2C
Reactivity	Human, Mouse, Rat
Application	IHC-P, ICC/IF
Host species	Mouse
Clonality	Monoclonal
Clonality No.	3B5-9D6-10E6
Isotype	IgG1
Purity	Affinity Purification
Conjugation	Un-conjugated
Concentration	1 mg/mL
Formulation	PBS Only
Storage Stability	Store at -20°C. Recommended to aliquot into single-use vials. Supplied in 1X PBS (pH 7.4). BSA and Azide Free. Stable for 12 months from date of receipt.



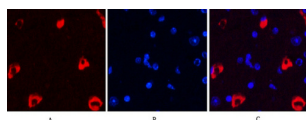
Immunohistochemistry analysis of paraffin-embedded Human Tonsil tissue using MAP2 (3B5) antibody. High-pressure and temperature Sodium Citrate pH 6.0 was used for antigen retrieval. Negative control was used by secondary antibody only.



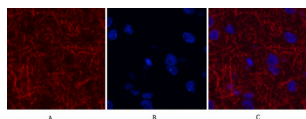
Immunohistochemical analysis of paraffin-embedded Human tonsils using MAP2 (3B5) antibody. High-pressure and temperature Sodium Citrate pH 6.0 was used for antigen retrieval. Negative control was used by secondary antibody only.



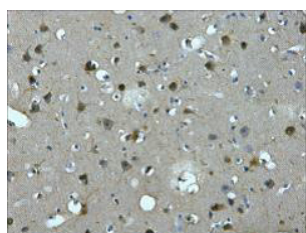
Immunohistochemistry analysis of paraffin-embedded mouse brain tissue using MAP2 antibody. High-pressure and temperature Sodium Citrate pH 6.0 was used for antigen retrieval. Negative control was used by secondary antibody only.



Immunofluorescence analysis of MAP2 (3B5) in mouse brain tissue using MAP2 (3B5) antibody (7D4) (red), and DAPI (blue).



Immunofluorescence analysis of MAP2 in rat brain using MAP2 antibody (7D4) (red), and DAPI (blue).



Immunohistochemistry analysis of paraffin-embedded Human brain tissue using MAP2 (3B5) antibody. High-pressure and temperature Sodium Citrate pH 6.0 was used for antigen retrieval.