

NSE (4C7) Mouse mAb (PBS Only)

db6437-PBS

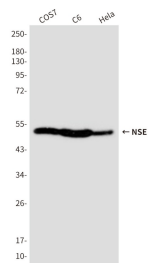
Package : 可询价

Product Name : NSE (4C7) Mouse mAb (PBS Only)**Cat.No.:** db6437-PBS**Synonyms** : ENO2; Gamma-enolase; 2-phospho-D-glycerate hydro-lyase; Enolase 2; Neural enolase; Neuron-specific enolase; NSE**Application** : WB, ICC/IF, IHC-P**Reactivity** : Human, Mouse, Rat**Host species** : Mouse

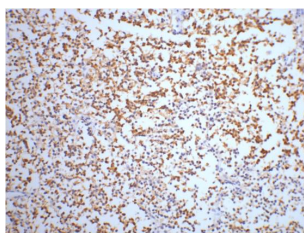
Background	Has neurotrophic and neuroprotective properties on a broad spectrum of central nervous system (CNS) neurons. Binds, in a calcium-dependent manner, to cultured neocortical neurons and promotes cell survival .
Immunogen	Synthetic Peptide of NSE
Gene ID	2026
Swiss Prot	P09104
Synonyms	ENO2; Gamma-enolase; 2-phospho-D-glycerate hydro-lyase; Enolase 2; Neural enolase; Neuron-specific enolase; NSE
Reactivity	Human, Mouse, Rat
Application	WB, ICC/IF, IHC-P
Calculated MW	47 kDa
Observed MW	47 kDa
Host species	Mouse
Clonality	Monoclonal
Clonality No.	4C7-4F10-10F9
Isotype	IgG1
Purity	Affinity Purification
Conjugation	Un-conjugated
Concentration	1 mg/mL
Formulation	PBS Only

Storage Stability

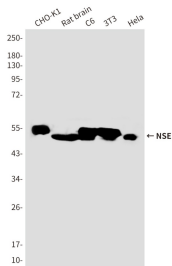
Store at -20°C. Recommended to aliquot into single-use vials. Supplied in 1X PBS (pH 7.4). BSA and Azide Free. Stable for 12 months from date of receipt.



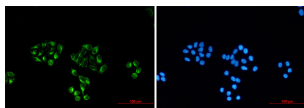
Western blot analysis of Enolase2 in COS7, C6 and HeLa lysates using Enolase2 antibody.



Immunohistochemistry analysis of paraffin-embedded Human small cell carcinoma of lung tissue using NSE antibody. High-pressure and temperature Sodium Citrate pH 6.0 was used for antigen retrieval.



Western blot analysis of NSE (4C7) in Enolase (4C7) in CHO-K1, rat brain, C6, 3T3, HeLa lysates using Enolase (4C7) antibody.



Immunocytochemistry analysis of NSE (4C7) (green) in HeLa using NSE (4C7) antibody, and DAPI (blue)