

KDM1A (1B2) Mouse mAb (PBS Only)

db6394-PBS

Package : 可询价

Product Name : KDM1A (1B2) Mouse mAb (PBS Only)**Cat.No.:** db6394-PBS**Synonyms** : KDM1A; AOF2; KDM1; KIAA0601; LSD1; Lysine-specific histone demethylase 1A; BRAF35-HDAC complex protein BHC110; Flavin-containing amine oxidase domain-containing protein 2**Application** : WB**Reactivity** : Human, Mouse, Monkey**Host species** : Mouse

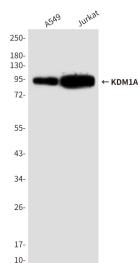
Background	The amine oxidase domain 2 (AOF2) gene encodes a nuclear protein (LSD1, ~95kDa) containing a Swirm domain, a FAD-binding motif, and an amine oxidase domain. This protein is a component of several histone deacetylase complexes, though it silences genes by functioning as a histone demethylase. LSD1 is a chromatin-modifying enzyme, which serve as a docking module for the stabilization of the associated corepressor complex (es) on chromatin.
Immunogen	Purified recombinant fragment of human LSD1 expressed in E. Coli
Gene ID	23028
Swiss Prot	O60341
Synonyms	KDM1A; AOF2; KDM1; KIAA0601; LSD1; Lysine-specific histone demethylase 1A; BRAF35-HDAC complex protein BHC110; Flavin-containing amine oxidase domain-containing protein 2
Reactivity	Human, Mouse, Monkey
Application	WB
Calculated MW	93 kDa
Observed MW	93 kDa
Host species	Mouse
Clonality	Monoclonal
Clonality No.	1B2-E5-G3
Isotype	IgG1
Purity	Affinity Purification
Conjugation	Un-conjugated
Concentration	1 mg/mL

Formulation

PBS Only

Storage Stability

Store at -20°C. Recommended to aliquot into single-use vials. Supplied in 1X PBS (pH 7.4). BSA and Azide Free. Stable for 12 months from date of receipt.



Western blot analysis of KDM1 / LSD1 in A549 and Jurkat lysates using KDM1 / LSD1 antibody.