

NSE (1G7) Mouse mAb (PBS Only)

db6276-PBS

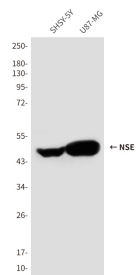
Package : 可询价

Product Name : NSE (1G7) Mouse mAb (PBS Only)**Cat.No.:** db6276-PBS**Synonyms** : ENO2; Gamma-enolase; 2-phospho-D-glycerate hydro-lyase; Enolase 2; Neural enolase; Neuron-specific enolase; NSE**Application** : WB, ELISA**Reactivity** : Human, Mouse, Rat**Host species** : Mouse

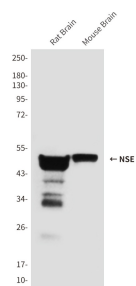
Background	Has neurotrophic and neuroprotective properties on a broad spectrum of central nervous system (CNS) neurons. Binds, in a calcium-dependent manner, to cultured neocortical neurons and promotes cell survival (By similarity).
Immunogen	Synthetic peptide derived from human NSE
Gene ID	2026
Swiss Prot	P09104
Synonyms	ENO2; Gamma-enolase; 2-phospho-D-glycerate hydro-lyase; Enolase 2; Neural enolase; Neuron-specific enolase; NSE
Reactivity	Human, Mouse, Rat
Application	WB, ELISA
Calculated MW	47 kDa
Observed MW	47 kDa
Host species	Mouse
Clonality	Monoclonal
Clonality No.	1G7-B4
Isotype	IgG1
Purity	Affinity Purification
Conjugation	Un-conjugated
Concentration	1 mg/mL
Formulation	PBS Only

Storage Stability

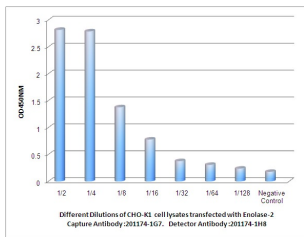
Store at -20°C. Recommended to aliquot into single-use vials. Supplied in 1X PBS (pH 7.4). BSA and Azide Free. Stable for 12 months from date of receipt.



Western blot analysis of Enolase2 in SH-SY5Y and U87-MG lysates using Enolase2 antibody.



Western blot analysis of NSE (1G7) in rat Brain and mouse Brain lysates using Enolase2 antibody.



Observed Enolase2 levels in CHO-K1 cell lysates transfected with Enolase2 at different dilution.