

PP1C alpha (1H1) Mouse mAb (PBS Only)

db6069-PBS

Package : 可询价

Product Name : PP1C alpha (1H1) Mouse mAb (PBS Only)**Cat.No.:** db6069-PBS

Synonyms : Alpha isoform serine threonine protein phosphatase PP1alpha 1 catalytic subunit; Catalytic subunit; PP1A; PP1A_HUMAN; PP1alpha; PP2C ALPHA; PP2CA; Ppp1ca; Protein Phosphatase 2C Alpha Isoform; Serine threonine protein phosphatase PP1 alpha catalytic subunit; Serine threonine protein phosphatase PP1 alpha catalytic subunit protein phosphatase 1; Serine/threonine-protein phosphatase PP1-alpha catalytic subunit

Application : WB, ICC/IF**Reactivity** : Human**Host species** : Mouse**Background**

Protein phosphatase that associates with over 200 regulatory proteins to form highly specific holoenzymes which dephosphorylate hundreds of biological targets. Protein phosphatase 1 (PP1) is essential for cell division, and participates in the regulation of glycogen metabolism, muscle contractility and protein synthesis. Involved in regulation of ionic conductances and long-term synaptic plasticity.

Immunogen

Purified recombinant human PPP1A protein fragments expressed in E.coli

Gene ID

5499

Swiss Prot

P62136

Synonyms

Alpha isoform serine threonine protein phosphatase PP1alpha 1 catalytic subunit; Catalytic subunit; PP1A; PP1A_HUMAN; PP1alpha; PP2C ALPHA; PP2CA; Ppp1ca; Protein Phosphatase 2C Alpha Isoform; Serine threonine protein phosphatase PP1 alpha catalytic subunit; Serine threonine protein phosphatase PP1 alpha catalytic subunit protein phosphatase 1; Serine/threonine-protein phosphatase PP1-alpha catalytic subunit

Reactivity

Human

Application

WB, ICC/IF

Calculated MW

38 kDa

Observed MW

38 kDa

Host species

Mouse

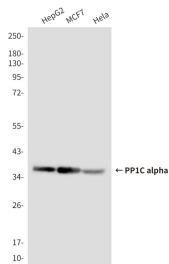
Clonality

Monoclonal

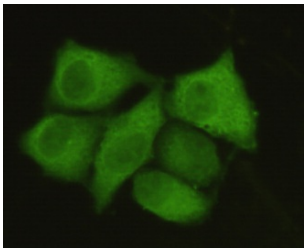
Clonality No.

1H1-F7-D8

Isotype	IgG1
Purity	Affinity Purification
Conjugation	Un-conjugated
Concentration	1 mg/mL
Formulation	PBS Only
Storage Stability	Store at -20°C. Recommended to aliquot into single-use vials. Supplied in 1X PBS (pH 7.4). BSA and Azide Free. Stable for 12 months from date of receipt.



Western blot analysis of PPP1A in HepG2, MCF-7 and HeLa lysates using PPP1A antibody.



Immunocytochemistry analysis of PP1C alpha in HeLa cells using PP1C alpha antibody.