

PP1C gamma (2F2A3) Mouse mAb (PBS Only)

db6068-PBS

Package : 可询价

Product Name : PP1C gamma (2F2A3) Mouse mAb (PBS Only)**Cat.No.:** db6068-PBS

Synonyms : PP 1G; PP-1G; PP1G; PP1G_HUMAN; PP1gamma; PPP 1G; PPP1CC; PPP1CC protein; PPP1G; Protein phosphatase 1 catalytic subunit gamma isoform; Protein phosphatase 1C catalytic subunit; Protein phosphatase 1C subunit; Protein phosphatase 2C gamma isoform; Serine/threonine phosphatase 1 gamma; Serine/threonine protein phosphatase PP1 gamma catalytic subunit; Serine/threonine-protein phosphatase PP1-gamma catalytic subunit

Application : WB**Reactivity :** Human**Host species :** Mouse**Background**

The protein encoded by this gene belongs to the protein phosphatase family, PP1 subfamily. PP1 is an ubiquitous serine/threonine phosphatase that regulates many cellular processes, including cell division. It is expressed in mammalian cells as three closely related isoforms, alpha, beta/delta and gamma, which have distinct localization patterns. This gene encodes the gamma isozyme. Alternatively spliced transcript variants encoding different isoforms have been found for this gene.

Immunogen

Purified recombinant human PP1C protein fragments expressed in E.coli

Gene ID

5501

Swiss Prot

P36873

Synonyms

PP 1G; PP-1G; PP1G; PP1G_HUMAN; PP1gamma; PPP 1G; PPP1CC; PPP1CC protein; PPP1G; Protein phosphatase 1 catalytic subunit gamma isoform; Protein phosphatase 1C catalytic subunit; Protein phosphatase 1C subunit; Protein phosphatase 2C gamma isoform; Serine/threonine phosphatase 1 gamma; Serine/threonine protein phosphatase PP1 gamma catalytic subunit; Serine/threonine-protein phosphatase PP1-gamma catalytic subunit

Reactivity

Human

Application

WB

Calculated MW

37 kDa

Observed MW

37 kDa

Host species

Mouse

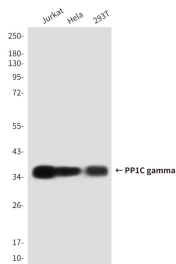
Clonality

Monoclonal

Clonality No.

2F2-A3-H10

Isotype	IgG2b
Purity	Affinity Purification
Conjugation	Un-conjugated
Concentration	1 mg/mL
Formulation	PBS Only
Storage Stability	Store at -20°C. Recommended to aliquot into single-use vials. Supplied in 1X PBS (pH 7.4). BSA and Azide Free. Stable for 12 months from date of receipt.



Western blot analysis of PP1C in HeLa, 293T and Jurkat lysates using PP1C antibody.