

Recombinant

DGRmAb®

AKT1/2/3 (DGR16839) Rabbit mAb (AF488)

db11977-DL488

Package : 100µL

Product Name : AKT1/2/3 (DGR16839) Rabbit mAb (AF488)**Cat.No.:** db11977-DL488**Synonyms** : MPPH; PKBG; MPPH2; PRKBG; STK-2; PKB-GAMMA; RAC-gamma; RAC-PK-gamma**Application** : WB, IHC-P, ICC/IF, FC, IP**Reactivity** : Human,Mouse,Rat**Host species** : Rabbit**Background**

The protein encoded by this gene is a member of the AKT, also called PKB, serine/threonine protein kinase family. AKT kinases are known to be regulators of cell signaling in response to insulin and growth factors. They are involved in a wide variety of biological processes including cell proliferation, differentiation, apoptosis, tumorigenesis, as well as glycogen synthesis and glucose uptake. This kinase has been shown to be stimulated by platelet-derived growth factor (PDGF), insulin, and insulin-like growth factor 1 (IGF1). Alternatively splice transcript variants encoding distinct isoforms have been described. [provided by RefSeq, Jul 2008]

Immunogen

Recombinant protein of human AKT1/2/3

Gene ID

10000

Swiss Prot

P31749

Synonyms

MPPH; PKBG; MPPH2; PRKBG; STK-2; PKB-GAMMA; RAC-gamma; RAC-PK-gamma

Reactivity

Human,Mouse,Rat

Application

WB, IHC-P, ICC/IF, FC, IP

Recommended dilution

ICC/IF: 1:200

Calculated MW

56 kDa

Host species

Rabbit

Clonality

Monoclonal

Clonality No.

DGR16839

Isotype

IgG

Purity

Affinity Purification

Conjugation

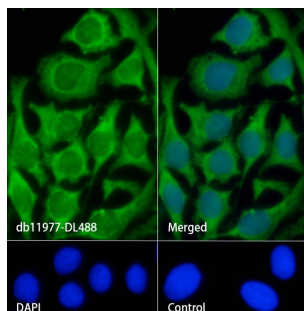
AF488

Concentration

1 mg/mL

Storage Stability

Store at -20°C. Avoid exposure to light. Supplied in PBS with 50% glycerol, 0.05% Proclin300, 0.5% BSA, pH 7.3. Stable for 12 months from date of receipt.



Immunofluorescence analysis of HeLa cells labelling AKT1/2/3 with db11977-DL488.

The cells were fixed with cold 100% methanol (10min, 4°C) and blocked in 1% BSA/10% normal goat serum/0.3M glycine in 0.1% PBS-Tween 20 for 1h. The cells were then incubate with db11977-DL488 (1:200, shown in green) at room temprature for 1h. Nuclear DNA was labeled in blue with DAPI.

Control: DAPI only.